

## ARSA Antibody

Catalog No: #32407

Package Size: #32407-1 50ul #32407-2 100ul

Orders: order@signalwayantibody.com

Support: tech@signalwayantibody.com

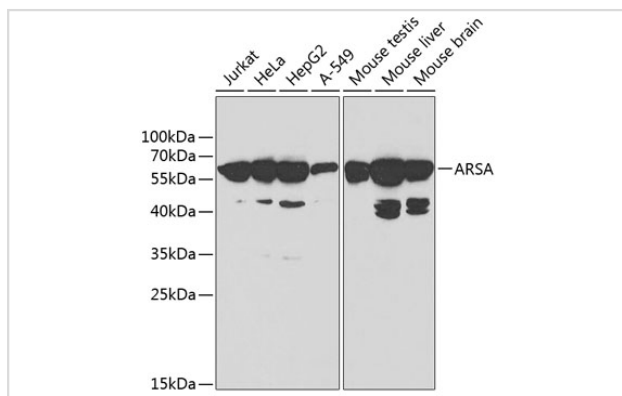
## Description

Product Name	ARSA Antibody
Host Species	Rabbit
Clonality	Polyclonal
Purification	Antibodies were purified by affinity purification using immunogen.
Applications	WB
Species Reactivity	Human,Mouse
Specificity	The antibody detects endogenous level of total ARSA protein.
Immunogen Type	Recombinant Protein
Immunogen Description	Recombinant protein of human ARSA.
Target Name	ARSA
Other Names	MLD; ARSA;
Accession No.	Swiss-Prot:P15289NCBI Gene ID:410
Uniprot	P15289
GeneID	410;
SDS-PAGE MW	54KD
Concentration	1.0mg/ml
Formulation	Supplied at 1.0mg/mL in phosphate buffered saline (without Mg <sup>2+</sup> and Ca <sup>2+</sup> ), pH 7.4, 150mM NaCl, 0.02% sodium azide and 50% glycerol.
Storage	Store at -20°C

## Application Details

WB □ 1:500 - 1:2000

## Images



Western blot analysis of extracts of various cell lines, using ARSA at 1:1000 dilution.

## Background

---

The protein encoded by this gene hydrolyzes cerebroside sulfate to cerebroside and sulfate. Defects in this gene lead to metachromatic leucodystrophy (MLD), a progressive demyelination disease which results in a variety of neurological symptoms and ultimately death. Alternatively spliced transcript variants have been described for this gene.

---

Note: This product is for in vitro research use only