

# KPNA1 Antibody

Catalog No: #32410

Package Size: #32410-1 50ul #32410-2 100ul

Orders: [order@signalwayantibody.com](mailto:order@signalwayantibody.com)Support: [tech@signalwayantibody.com](mailto:tech@signalwayantibody.com)

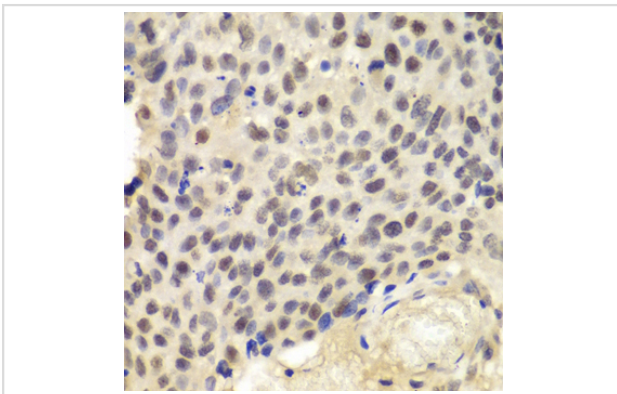
## Description

|                       |   |
|-----------------------|---|
| Product Name          | KPNA1 Antibody  |
| Host Species          | Rabbit  |
| Clonality             | Polyclonal  |
| Isotype               | IgG   |
| Purification          | Affinity purification   |
| Applications          | WB,IHC  |
| Species Reactivity    | Human,Mouse,Rat   |
| Specificity           | The antibody detects endogenous level of total KPNA1 protein. |
| Immunogen Type        | Recombinant Protein   |
| Immunogen Description | Recombinant fusion protein of human KPNA1 (NP_002255.3).      |
| Target Name           | KPNA1   |
| Other Names           | KPNA1;IPOA5;NPI-1;RCH2;SRP1                                   |
| Accession No.         | Uniprot:P52294GeneID:3836                                     |
| Uniprot               | P52294  |
| GeneID                | 3836  |
| SDS-PAGE MW           | 60kDa/70kDa   |
| Concentration         | 1.0mg/ml  |
| Formulation           | PBS with 0.02% sodium azide,50% glycerol,pH7.3.               |
| Storage               | Store at -20°C. Avoid freeze / thaw cycles.                   |

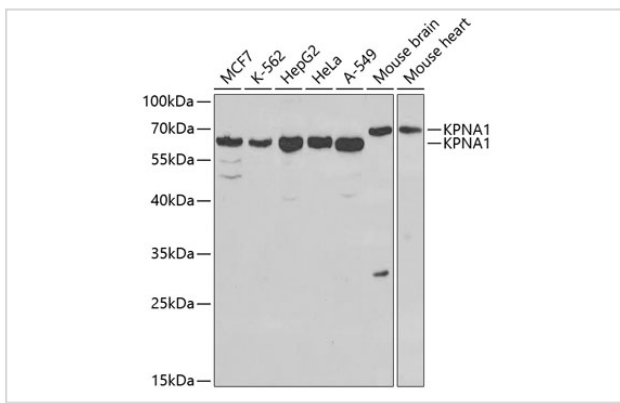
## Application Details

WB □ 1:500 - 1:2000 IHC □ 1:50 - 1:200

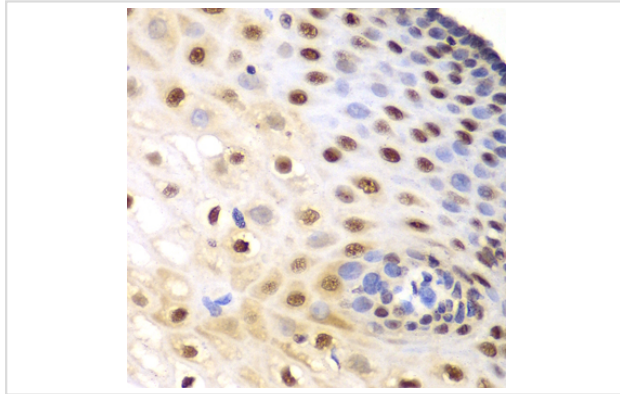
## Images



Immunohistochemistry of paraffin-embedded human lung cancer using KPNA1 antibody.



Western blot analysis of extracts of various cell lines, using KPNA1 antibody.



Immunohistochemistry of paraffin-embedded human esophagus using KPNA1 antibody.

## Background

The transport of molecules between the nucleus and the cytoplasm in eukaryotic cells is mediated by the nuclear pore complex (NPC), which consists of 60-100 proteins. Small molecules (up to 70 kD) can pass through the nuclear pore by nonselective diffusion while larger molecules are transported by an active process. The protein encoded by this gene belongs to the importin alpha family, and is involved in nuclear protein import. This protein interacts with the recombination activating gene 1 (RAG1) protein and is a putative substrate of the RAG1 ubiquitin ligase. Alternative splicing results in multiple transcript variants.

Note: This product is for in vitro research use only