

## PTH1R Antibody

Catalog No: #32412

Package Size: #32412-1 50ul #32412-2 100ul

Orders: [order@signalwayantibody.com](mailto:order@signalwayantibody.com)Support: [tech@signalwayantibody.com](mailto:tech@signalwayantibody.com)

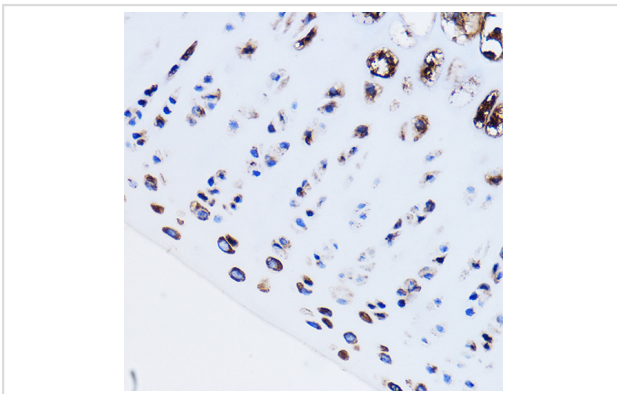
## Description

Product Name	PTH1R Antibody
Host Species	Rabbit
Clonality	Polyclonal
Isotype	IgG
Purification	Affinity purification
Applications	WB,IHC
Species Reactivity	Human,Mouse,Rat
Specificity	The antibody detects endogenous level of total PTH1R protein.
Immunogen Type	Recombinant Protein
Immunogen Description	Recombinant fusion protein of human PTH1R (NP_000307.1).
Target Name	PTH1R
Other Names	PTH1R;PFE;PTHR;PTHR1
Accession No.	Uniprot:Q03431GeneID:5745
Uniprot	Q03431
GeneID	5745
SDS-PAGE MW	66kDa
Concentration	1.0mg/ml
Formulation	PBS with 0.02% sodium azide,50% glycerol,pH7.3.
Storage	Store at -20°C. Avoid freeze / thaw cycles.

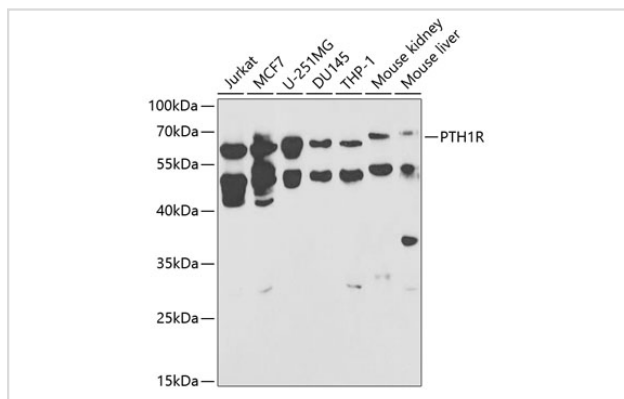
## Application Details

WB □ 1:500 - 1:2000 IHC □ 1:50 - 1:200

## Images



Immunohistochemistry of paraffin-embedded Rat leg bone using PTH1R Rabbit pAb.



Western blot analysis of extracts of various cell lines, using PTH1R antibody.

## Background

The protein encoded by this gene is a member of the G-protein coupled receptor family 2. This protein is a receptor for parathyroid hormone (PTH) and for parathyroid hormone-like hormone (PTHrP). The activity of this receptor is mediated by G proteins which activate adenylyl cyclase and also a phosphatidylinositol-calcium second messenger system. Defects in this receptor are known to be the cause of Jansen's metaphyseal chondrodysplasia (JMC), chondrodysplasia Blomstrand type (BOCD), as well as enchondromatosis. Two transcript variants encoding the same protein have been found for this gene.

Note: This product is for in vitro research use only