

VCL Antibody

Catalog No: #32418

Package Size: #32418-1 50ul #32418-2 100ul

Orders: order@signalwayantibody.com

Support: tech@signalwayantibody.com

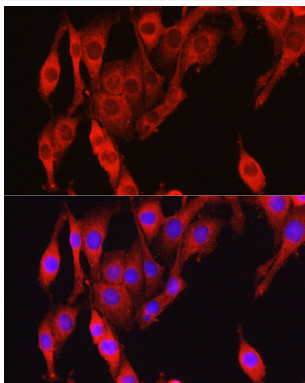
Description

Product Name	VCL Antibody
Host Species	Rabbit
Clonality	Polyclonal
Isotype	IgG
Purification	Affinity purification
Applications	WB,IHC,IF
Species Reactivity	Human,Mouse,Rat
Specificity	The antibody detects endogenous level of total VCL protein.
Immunogen Type	Recombinant Protein
Immunogen Description	Recombinant fusion protein of human Vinculin (NP_003364.1).
Target Name	VCL
Other Names	VCL;CMD1W;CMH15;HEL114;MV;MVCL;vinculin
Accession No.	Uniprot:P18206GeneID:7414
Uniprot	P18206
GeneID	7414
SDS-PAGE MW	124KDa
Concentration	1.0mg/ml
Formulation	PBS with 0.02% sodium azide,50% glycerol,pH7.3.
Storage	Store at -20°C. Avoid freeze / thaw cycles.

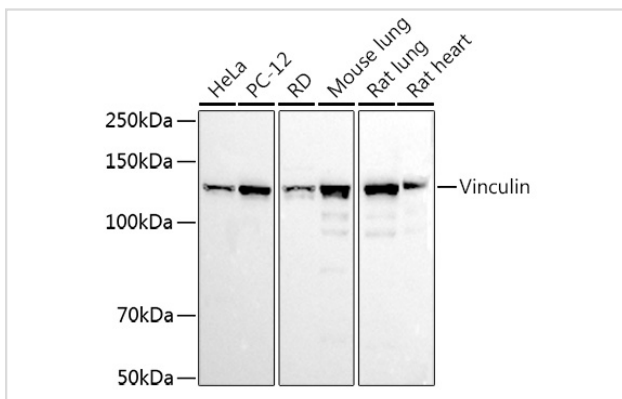
Application Details

WB □ 1:500 - 1:2000 IHC □ 1:50 - 1:200 IF □ 1:50 - 1:200

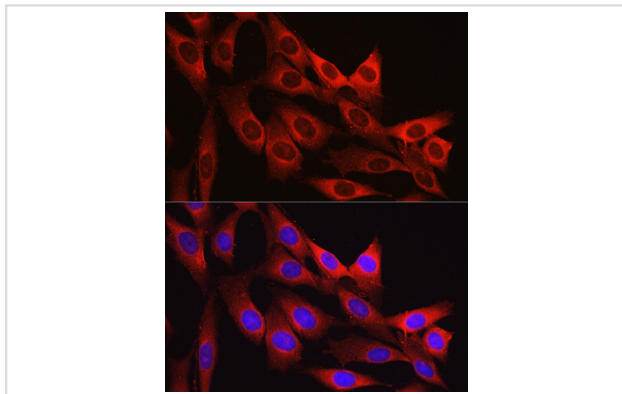
Images



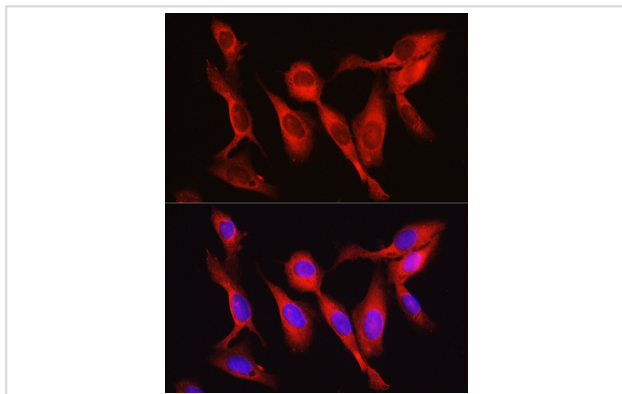
Immunofluorescence analysis of PC-12 cells using Vinculin antibody.



Western blot analysis of extracts of various cell lines, using Vinculin antibody.



Immunofluorescence analysis of NIH/3T3 cells using Vinculin antibody.



Immunofluorescence analysis of U2OS cells using Vinculin antibody.

Background

Vinculin is a cytoskeletal protein associated with cell-cell and cell-matrix junctions, where it is thought to function as one of several interacting proteins involved in anchoring F-actin to the membrane. Defects in VCL are the cause of cardiomyopathy dilated type 1W. Dilated cardiomyopathy is a disorder characterized by ventricular dilation and impaired systolic function, resulting in congestive heart failure and arrhythmia. Multiple alternatively spliced transcript variants have been found for this gene, but the biological validity of some variants has not been determined.

Note: This product is for in vitro research use only