

## CD1D Antibody

Catalog No: #32419

Package Size: #32419-1 50ul #32419-2 100ul

Orders: order@signalwayantibody.com

Support: tech@signalwayantibody.com

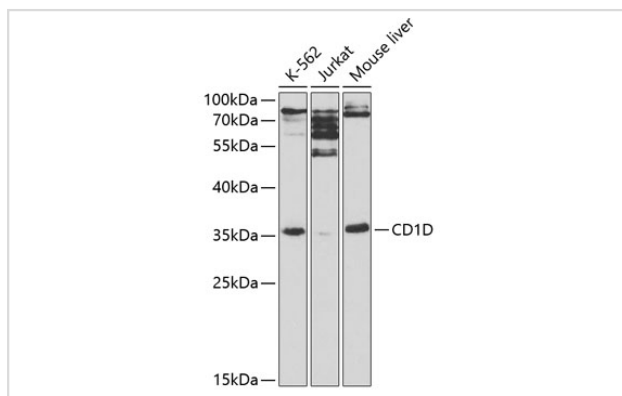
## Description

Product Name	CD1D Antibody
Host Species	Rabbit
Clonality	Polyclonal
Purification	Antibodies were purified by affinity purification using immunogen.
Applications	WB,IF
Species Reactivity	Human,Mouse
Specificity	The antibody detects endogenous level of total CD1D protein.
Immunogen Type	Recombinant Protein
Immunogen Description	Recombinant protein of human CD1D.
Target Name	CD1D
Other Names	CD1A; MGC34622; R3;
Accession No.	Swiss-Prot:P15813NCBI Gene ID:912
Uniprot	P15813
GeneID	912;
SDS-PAGE MW	38KD
Concentration	1.0mg/ml
Formulation	Supplied at 1.0mg/mL in phosphate buffered saline (without Mg <sup>2+</sup> and Ca <sup>2+</sup> ), pH 7.4, 150mM NaCl, 0.02% sodium azide and 50% glycerol.
Storage	Store at -20°C

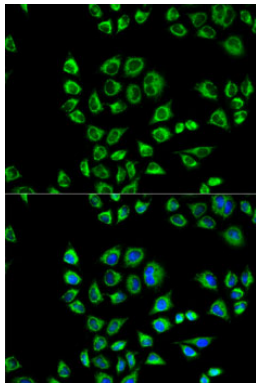
## Application Details

WB □ 1:500 - 1:2000 IF □ 1:50 - 1:200

## Images



Western blot analysis of extracts of various cell lines, using CD1D at 1:1000 dilution.



Immunofluorescence analysis of HeLa cells using CD1D .  
Blue: DAPI for nuclear staining.

## Background

This gene encodes a divergent member of the CD1 family of transmembrane glycoproteins, which are structurally related to the major histocompatibility complex (MHC) proteins and form heterodimers with beta-2-microglobulin. The CD1 proteins mediate the presentation of primarily lipid and glycolipid antigens of self or microbial origin to T cells. The human genome contains five CD1 family genes organized in a cluster on chromosome 1. The CD1 family members are thought to differ in their cellular localization and specificity for particular lipid ligands. The protein encoded by this gene localizes to late endosomes and lysosomes via a tyrosine-based motif in the cytoplasmic tail.

Note: This product is for in vitro research use only