

## IL16 Antibody

Catalog No: #32422

Package Size: #32422-1 50ul #32422-2 100ul

Orders: [order@signalwayantibody.com](mailto:order@signalwayantibody.com)Support: [tech@signalwayantibody.com](mailto:tech@signalwayantibody.com)

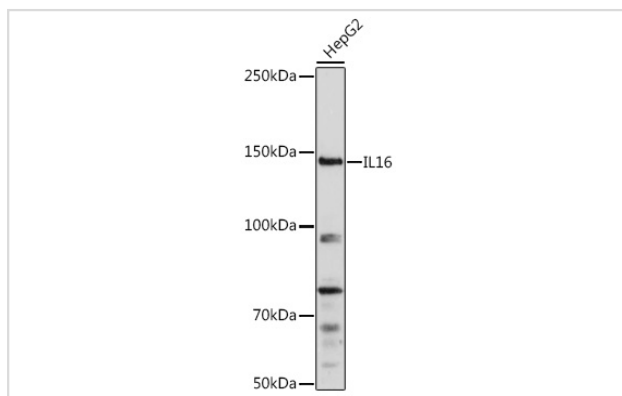
## Description

Product Name	IL16 Antibody
Host Species	Rabbit
Clonality	Polyclonal
Isotype	IgG
Purification	Affinity purification
Applications	WB
Species Reactivity	Human,Mouse
Specificity	The antibody detects endogenous level of total IL16 protein.
Immunogen Type	Recombinant Protein
Immunogen Description	Recombinant fusion protein of human IL16 (NP_757366.2).
Target Name	IL16
Other Names	IL16;LCF;NIL16;PRIL16;prIL-16
Accession No.	Uniprot:Q14005GeneID:3603
Uniprot	Q14005
GeneID	3603
SDS-PAGE MW	142KDa
Concentration	1.0mg/ml
Formulation	PBS with 0.02% sodium azide,50% glycerol,pH7.3.
Storage	Store at -20°C. Avoid freeze / thaw cycles.

## Application Details

WB 1:500 - 1:2000

## Images



Western blot analysis of extracts of HepG2 cells, using IL16 Rabbit pAb.

## Background

---

The protein encoded by this gene is a pleiotropic cytokine that functions as a chemoattractant, a modulator of T cell activation, and an inhibitor of HIV replication. The signaling process of this cytokine is mediated by CD4. The product of this gene undergoes proteolytic processing, which is found to yield two functional proteins. The cytokine function is exclusively attributed to the secreted C-terminal peptide, while the N-terminal product may play a role in cell cycle control. Caspase 3 is reported to be involved in the proteolytic processing of this protein. Alternate splicing results in multiple transcript variants.

---

Note: This product is for in vitro research use only