

AIRE Antibody

Catalog No: #32424

Package Size: #32424-1 50ul #32424-2 100ul

Orders: order@signalwayantibody.comSupport: tech@signalwayantibody.com

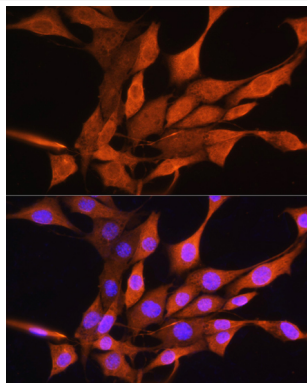
Description

Product Name	AIRE Antibody
Host Species	Rabbit
Clonality	Polyclonal
Isotype	IgG
Purification	Affinity purification
Applications	WB,IF
Species Reactivity	Human,Mouse,Rat
Specificity	The antibody detects endogenous level of total AIRE protein.
Immunogen Type	Peptide
Immunogen Description	A synthetic peptide of human AIRE (NP_000374.1).
Target Name	AIRE
Other Names	AIRE;AIRE1;APECED;APS1;APSI;PGA1
Accession No.	Uniprot:O43918GeneID:326
Uniprot	O43918
GeneID	326
SDS-PAGE MW	55kDa
Concentration	1.0mg/ml
Formulation	PBS with 0.02% sodium azide,50% glycerol,pH7.3.
Storage	Store at -20°C. Avoid freeze / thaw cycles.

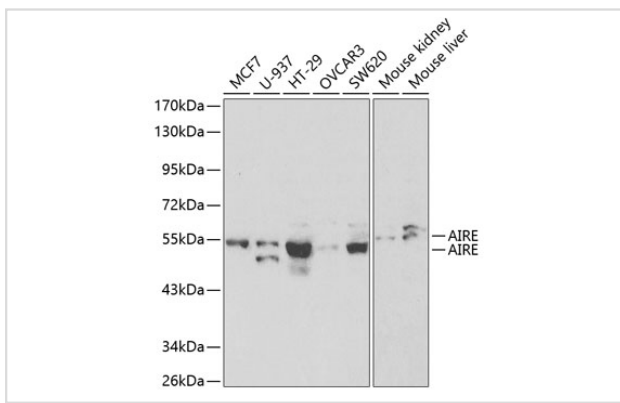
Application Details

WB \square 1:500 - 1:2000 IF \square 1:50 - 1:200

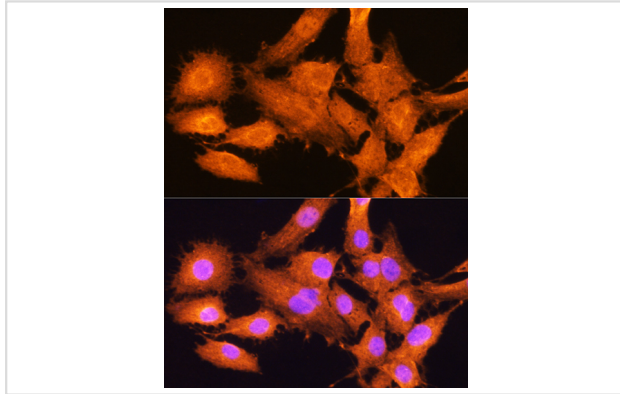
Images



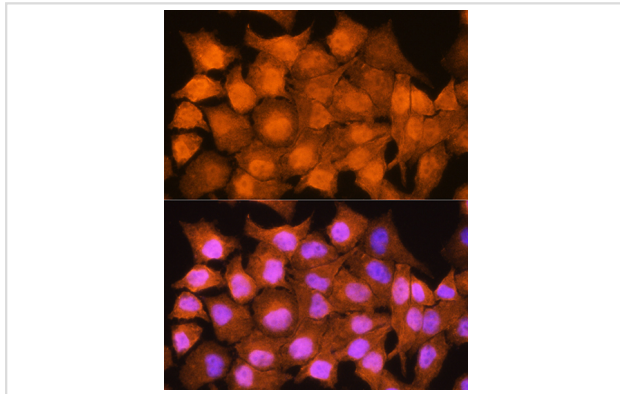
Immunofluorescence analysis of NIH/3T3 cells using AIRE Rabbit pAb.



Western blot analysis of extracts of various cell lines, using AIRE antibody.



Immunofluorescence analysis of C6 cells using AIRE Rabbit pAb.



Immunofluorescence analysis of HeLa cells using AIRE Rabbit pAb.

Background

This gene encodes a transcriptional regulator that forms nuclear bodies and interacts with the transcriptional coactivator CREB binding protein. The encoded protein plays an important role in immunity by regulating the expression of autoantigens and negative selection of autoreactive T-cells in the thymus. Mutations in this gene cause the rare autosomal-recessive systemic autoimmune disease termed autoimmune polyendocrinopathy with candidiasis and ectodermal dystrophy (APECED).

Note: This product is for in vitro research use only