

## FTL Antibody

Catalog No: #32425

Package Size: #32425-1 50ul #32425-2 100ul

Orders: order@signalwayantibody.com

Support: tech@signalwayantibody.com

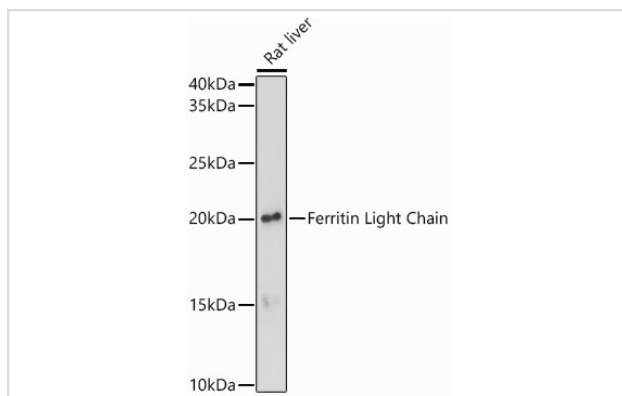
## Description

Product Name	FTL Antibody
Host Species	Rabbit
Clonality	Polyclonal
Isotype	IgG
Purification	Affinity purification
Applications	WB,IHC,IF
Species Reactivity	Human,Mouse,Rat
Specificity	The antibody detects endogenous level of total FTL protein.
Immunogen Type	Recombinant Protein
Immunogen Description	Recombinant fusion protein of human Ferritin Light Chain (NP_000137.2).
Target Name	FTL
Other Names	FTL;LFTD;NBIA3
Accession No.	Uniprot:P02792GenID:2512
Uniprot	P02792
GenID	2512
SDS-PAGE MW	20KDa
Concentration	1.0mg/ml
Formulation	PBS with 0.02% sodium azide,50% glycerol,pH7.3.
Storage	Store at -20°C. Avoid freeze / thaw cycles.

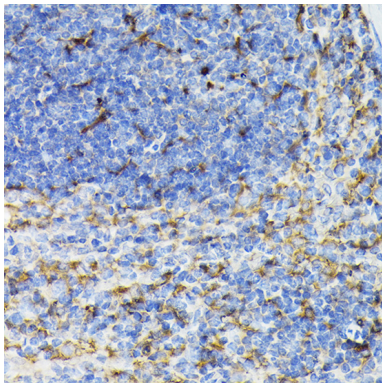
## Application Details

WB 1:500 - 1:2000 IHC 1:50 - 1:200 IF 1:10 - 1:100

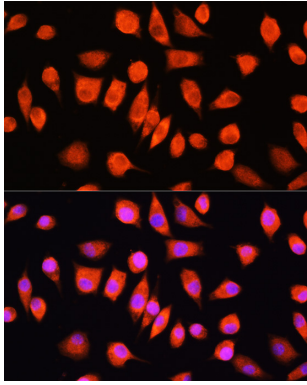
## Images



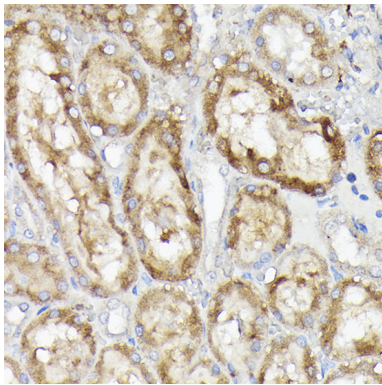
Western blot analysis of extracts of Rat liver, using Ferritin Light Chain antibody.



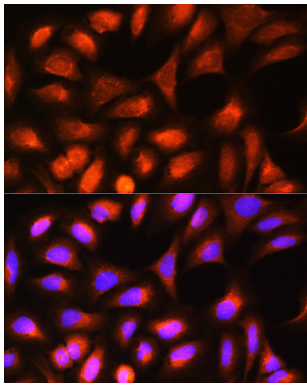
Immunohistochemistry of paraffin-embedded mouse spleen using Ferritin Light Chain Rabbit pAb.



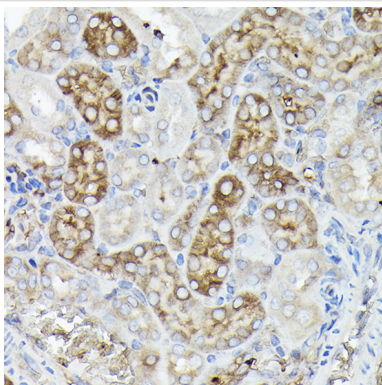
Immunofluorescence analysis of L929 cells using Ferritin Light Chain Rabbit pAb.



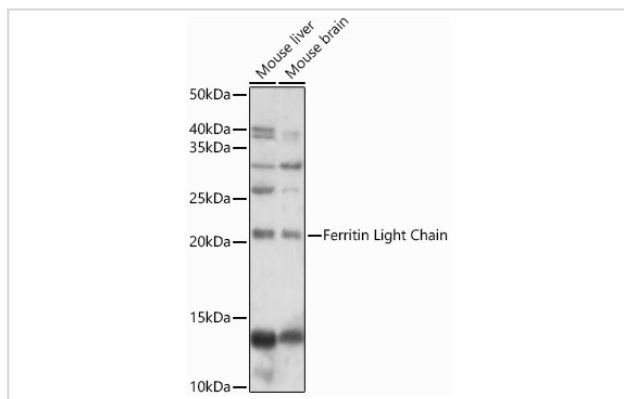
Immunohistochemistry of paraffin-embedded rat kidney using Ferritin Light Chain Rabbit pAb.



Immunofluorescence analysis of U-2 OS cells using Ferritin Light Chain Rabbit pAb.



Immunohistochemistry of paraffin-embedded mouse kidney using Ferritin Light Chain Rabbit pAb.



Western blot analysis of extracts of various cell lines, using Ferritin Light Chain antibody.

## Background

This gene encodes the light subunit of the ferritin protein. Ferritin is the major intracellular iron storage protein in prokaryotes and eukaryotes. It is composed of 24 subunits of the heavy and light ferritin chains. Variation in ferritin subunit composition may affect the rates of iron uptake and release in different tissues. A major function of ferritin is the storage of iron in a soluble and nontoxic state. Defects in this light chain ferritin gene are associated with several neurodegenerative diseases and hyperferritinemia-cataract syndrome. This gene has multiple pseudogenes.

Note: This product is for in vitro research use only