

## BUB1B Antibody

Catalog No: #32428

Package Size: #32428-1 50ul #32428-2 100ul

Orders: order@signalwayantibody.com

Support: tech@signalwayantibody.com

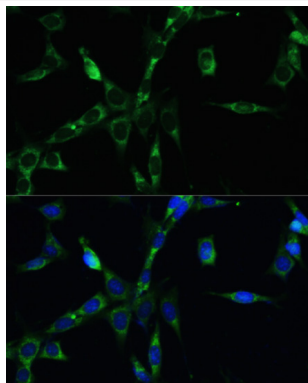
## Description

Product Name	BUB1B Antibody
Host Species	Rabbit
Clonality	Polyclonal
Isotype	IgG
Purification	Affinity purification
Applications	WB,IF
Species Reactivity	Human,Mouse,Rat
Specificity	The antibody detects endogenous level of total BUB1B protein.
Immunogen Type	Recombinant Protein
Immunogen Description	Recombinant fusion protein of human BUB1B (NP_001202.4).
Target Name	BUB1B
Other Names	BUB1B;BUB1beta;BUBR1;Bub1A;MAD3L;MVA1;SSK1;hBUBR1
Accession No.	Uniprot:O60566GeneID:701
Uniprot	O60566
GeneID	701
SDS-PAGE MW	55kDa/120kDa
Concentration	1.0mg/ml
Formulation	PBS with 0.02% sodium azide,50% glycerol,pH7.3.
Storage	Store at -20°C. Avoid freeze / thaw cycles.

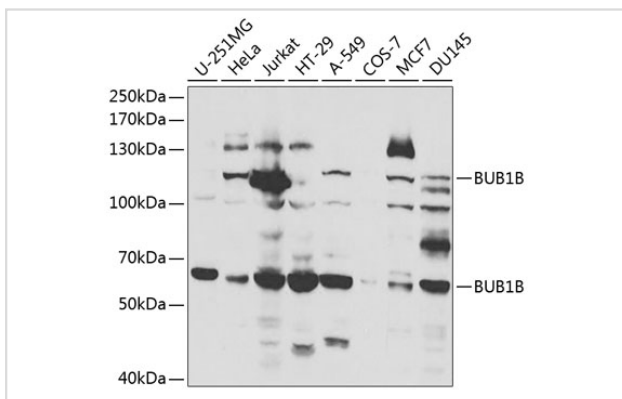
## Application Details

WB □ 1:500 - 1:2000 IF □ 1:50 - 1:200

## Images



Immunofluorescence analysis of NIH-3T3 cells using BUB1B antibody.



Western blot analysis of extracts of various cell lines, using BUB1B antibody.

## Background

This gene encodes a kinase involved in spindle checkpoint function. The protein has been localized to the kinetochore and plays a role in the inhibition of the anaphase-promoting complex/cyclosome (APC/C), delaying the onset of anaphase and ensuring proper chromosome segregation. Impaired spindle checkpoint function has been found in many forms of cancer.

Note: This product is for in vitro research use only