

## GGT1 Antibody

Catalog No: #32429

Package Size: #32429-1 50ul #32429-2 100ul

Orders: order@signalwayantibody.com

Support: tech@signalwayantibody.com

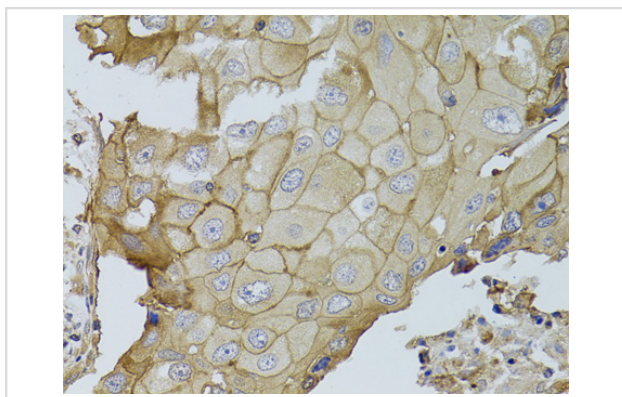
## Description

Product Name	GGT1 Antibody
Host Species	Rabbit
Clonality	Polyclonal
Purification	Antibodies were purified by affinity purification using immunogen.
Applications	WB,IHC
Species Reactivity	Human,Mouse,Rat
Specificity	The antibody detects endogenous level of total GGT1 protein.
Immunogen Type	Recombinant Protein
Immunogen Description	Recombinant protein of human GGT1.
Target Name	GGT1
Other Names	GGT; GTG; CD224; GGT1; D22S672
Accession No.	Swiss-Prot:P19440NCBI Gene ID:2678
Uniprot	P19440
GeneID	2678;
SDS-PAGE MW	60KD
Concentration	1.0mg/ml
Formulation	Supplied at 1.0mg/mL in phosphate buffered saline (without Mg <sup>2+</sup> and Ca <sup>2+</sup> ), pH 7.4, 150mM NaCl, 0.02% sodium azide and 50% glycerol.
Storage	Store at -20°C

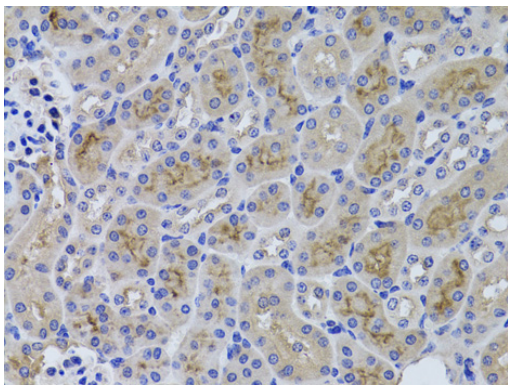
## Application Details

WB □ 1:500 - 1:2000 IHC □ 1:50 - 1:200

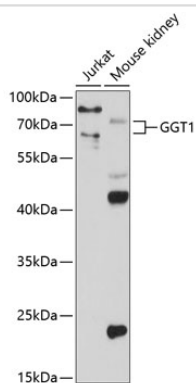
## Images



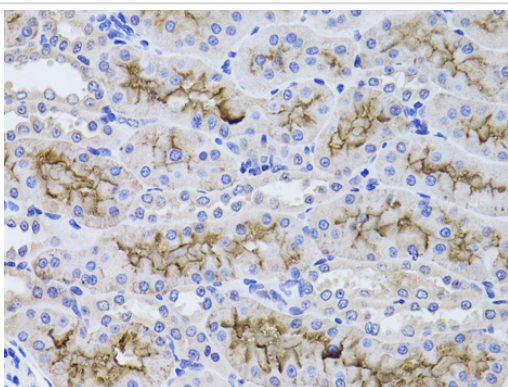
Immunohistochemistry of paraffin-embedded human breast cancer using GGT1 at dilution of 1:100 (40x lens).



Immunohistochemistry of paraffin-embedded mouse kidney using GGT1 at dilution of 1:100 (40x lens).



Western blot analysis of extracts of various cell lines, using GGT1 at 1:1000 dilution.



Immunohistochemistry of paraffin-embedded rat kidney using GGT1 at dilution of 1:100 (40x lens).

## Background

The enzyme encoded by this gene catalyzes the transfer of the glutamyl moiety of glutathione to a variety of amino acids and dipeptide acceptors. The enzyme is composed of a heavy chain and a light chain, which are derived from a single precursor protein, and is present in tissues involved in absorption and secretion. This enzyme is a member of the gamma-glutamyltransferase protein family, of which many members have not yet been fully characterized and some of which may represent pseudogenes. This gene is classified as type I gamma-glutamyltransferase. Multiple alternatively spliced variants, encoding the same protein, have been identified.

Note: This product is for in vitro research use only