

## ALDH1A1 Antibody

Catalog No: #32441

Package Size: #32441-1 50ul #32441-2 100ul

Orders: [order@signalwayantibody.com](mailto:order@signalwayantibody.com)Support: [tech@signalwayantibody.com](mailto:tech@signalwayantibody.com)

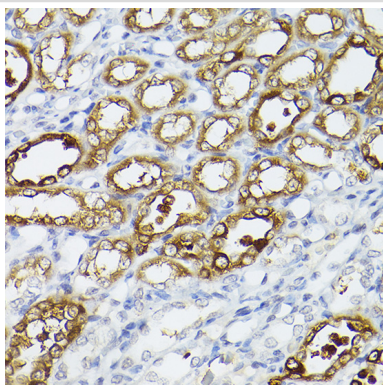
## Description

|                       |  |
|-----------------------|--|
| Product Name          | ALDH1A1 Antibody   |
| Host Species          | Rabbit   |
| Clonality             | Polyclonal   |
| Isotype               | IgG  |
| Purification          | Affinity purification  |
| Applications          | WB,IHC,IF  |
| Species Reactivity    | Human,Mouse,Rat  |
| Specificity           | The antibody detects endogenous level of total ALDH1A1 protein.      |
| Immunogen Type        | Recombinant Protein  |
| Immunogen Description | Recombinant fusion protein of human ALDH1A1 (NP_000680.2).           |
| Target Name           | ALDH1A1  |
| Other Names           | ALDH1A1;ALDC;ALDH-E1;ALDH1;ALDH11;HEL-9;HEL-S-53e;HEL12;PUMB1;RALDH1 |
| Accession No.         | Uniprot:P00352GeneID:216   |
| Uniprot               | P00352   |
| GeneID                | 216  |
| SDS-PAGE MW           | 55KDa  |
| Concentration         | 1.0mg/ml   |
| Formulation           | PBS with 0.02% sodium azide,50% glycerol,pH7.3.                      |
| Storage               | Store at -20°C. Avoid freeze / thaw cycles.                          |

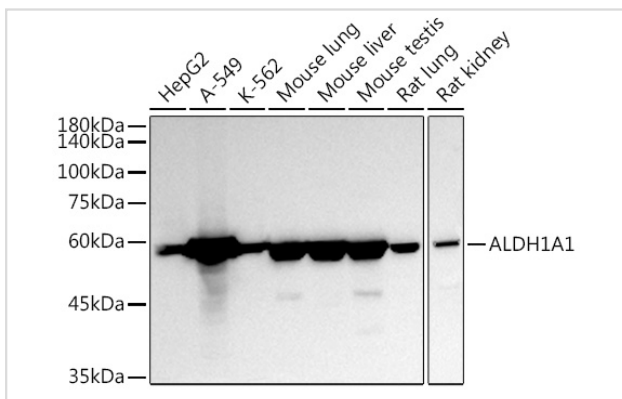
## Application Details

WB 1:500 - 1:2000 IHC 1:50 - 1:200 IF 1:50 - 1:200

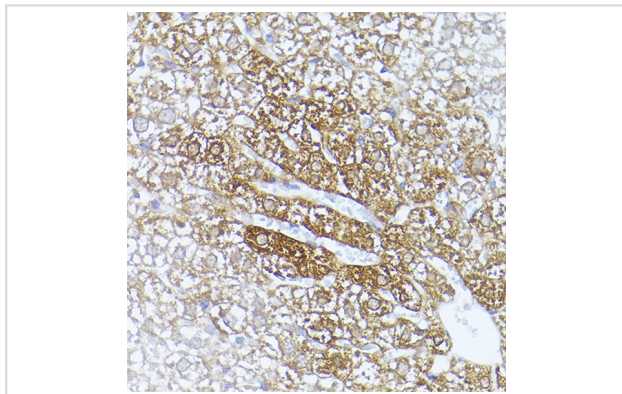
## Images



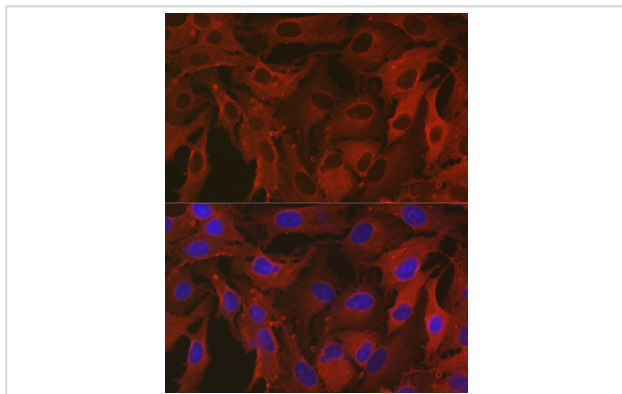
Immunohistochemistry of paraffin-embedded rat kidney using ALDH1A1 Rabbit pAb.



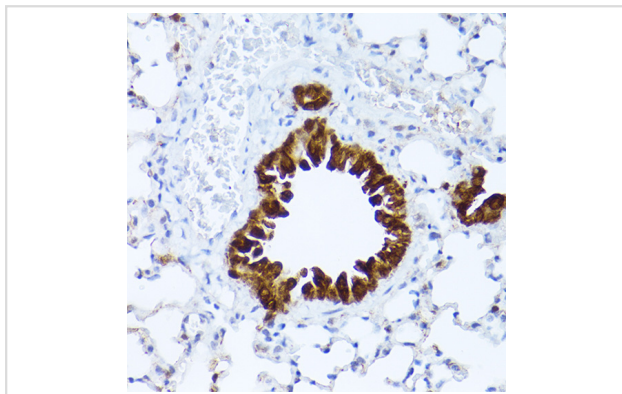
Western blot analysis of extracts of various cell lines, using ALDH1A1 antibody.



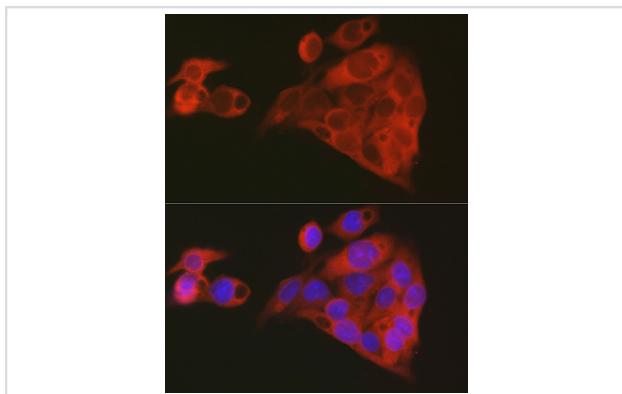
Immunohistochemistry of paraffin-embedded mouse liver using ALDH1A1 Rabbit pAb.



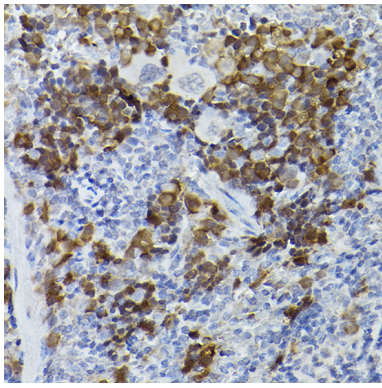
Immunofluorescence analysis of A-549 cells using ALDH1A1 Rabbit pAb.



Immunohistochemistry of paraffin-embedded mouse lung using ALDH1A1 Rabbit pAb.



Immunofluorescence analysis of HepG2 cells using ALDH1A1 Rabbit pAb.



Immunohistochemistry of paraffin-embedded rat spleen using ALDH1A1 Rabbit pAb.

## Background

The protein encoded by this gene belongs to the aldehyde dehydrogenase family. Aldehyde dehydrogenase is the next enzyme after alcohol dehydrogenase in the major pathway of alcohol metabolism. There are two major aldehyde dehydrogenase isozymes in the liver, cytosolic and mitochondrial, which are encoded by distinct genes, and can be distinguished by their electrophoretic mobility, kinetic properties, and subcellular localization. This gene encodes the cytosolic isozyme. Studies in mice show that through its role in retinol metabolism, this gene may also be involved in the regulation of the metabolic responses to high-fat diet.

Note: This product is for in vitro research use only