

PTPN2 Antibody

Catalog No: #32444

Package Size: #32444-1 50ul #32444-2 100ul

Orders: order@signalwayantibody.comSupport: tech@signalwayantibody.com

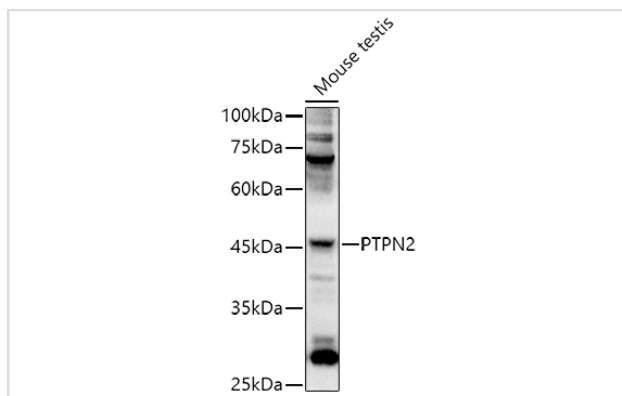
Description

Product Name	PTPN2 Antibody
Host Species	Rabbit
Clonality	Polyclonal
Isotype	IgG
Purification	Affinity purification
Applications	WB,IF
Species Reactivity	Human,Mouse,Rat
Specificity	The antibody detects endogenous level of total PTPN2 protein.
Immunogen Type	Recombinant Protein
Immunogen Description	Recombinant fusion protein of human PTPN2 (NP_536348.1).
Target Name	PTPN2
Other Names	PTPN2;PTN2;PTPT;TC-PTP;TCELLPTP;TCPTP
Accession No.	Uniprot:P17706GenelD:5771
Uniprot	P17706
GenelD	5771
SDS-PAGE MW	45kDa
Concentration	1.0mg/ml
Formulation	PBS with 0.02% sodium azide,50% glycerol,pH7.3.
Storage	Store at -20°C. Avoid freeze / thaw cycles.

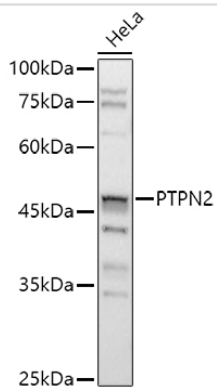
Application Details

WB \square 1:500 - 1:2000 IF \square 1:50 - 1:200

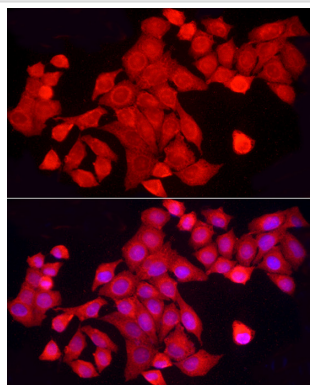
Images



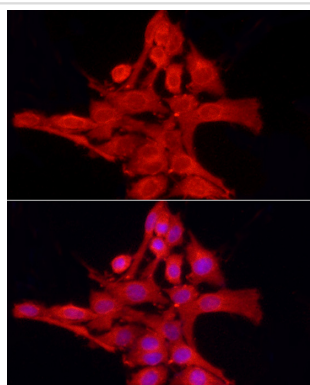
Western blot analysis of extracts of Mouse testis, using PTPN2 antibody.



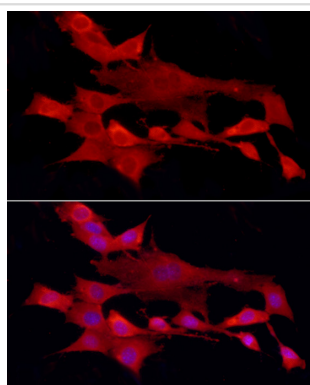
Western blot analysis of extracts of HeLa cells, using PTPN2 antibody.



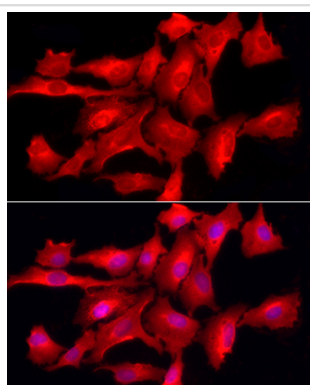
Immunofluorescence analysis of HeLa cells using [KO Validated] PTPN2 Rabbit pAb.



Immunofluorescence analysis of PC-12 cells using [KO Validated] PTPN2 Rabbit pAb.



Immunofluorescence analysis of NIH/3T3 cells using [KO Validated] PTPN2 Rabbit pAb.



Immunofluorescence analysis of A-549 cells using [KO Validated] PTPN2 Rabbit pAb.

Background

The protein encoded by this gene is a member of the protein tyrosine phosphatase (PTP) family. Members of the PTP family share a highly conserved catalytic motif, which is essential for the catalytic activity. PTPs are known to be signaling molecules that regulate a variety of cellular processes including cell growth, differentiation, mitotic cycle, and oncogenic transformation. Epidermal growth factor receptor and the adaptor protein Shc were reported to be substrates of this PTP, which suggested the roles in growth factor mediated cell signaling. Multiple alternatively spliced transcript variants encoding different isoforms have been found. Two highly related but distinctly processed pseudogenes that localize to chromosomes 1 and 13, respectively, have been reported.

Note: This product is for in vitro research use only