

## IL2RG Antibody

Catalog No: #32456

Package Size: #32456-1 50ul #32456-2 100ul

Orders: order@signalwayantibody.com

Support: tech@signalwayantibody.com

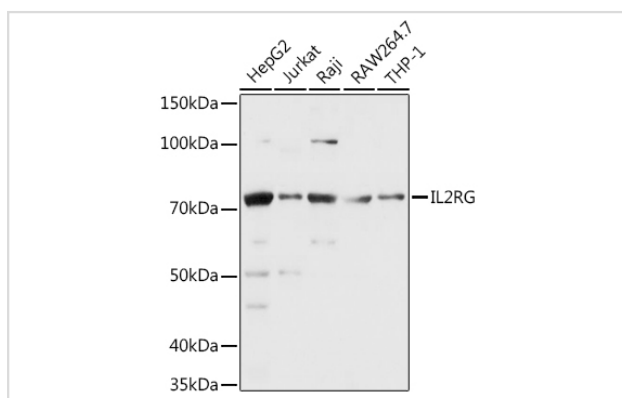
## Description

|                       |   |
|-----------------------|---|
| Product Name          | IL2RG Antibody  |
| Host Species          | Rabbit  |
| Clonality             | Polyclonal  |
| Isotype               | IgG   |
| Purification          | Affinity purification   |
| Applications          | WB  |
| Species Reactivity    | Human,Mouse   |
| Specificity           | The antibody detects endogenous level of total IL2RG protein. |
| Immunogen Type        | Recombinant Protein   |
| Immunogen Description | Recombinant fusion protein of human IL2RG (NP_000197.1).      |
| Target Name           | IL2RG   |
| Other Names           | IL2RG;CD132;CIDX;IL-2RG;IMD4;P64;SCIDX;SCIDX1                 |
| Accession No.         | Uniprot:P31785GeneID:3561                                     |
| Uniprot               | P31785  |
| GeneID                | 3561  |
| SDS-PAGE MW           | 70KDa   |
| Concentration         | 1.0mg/ml  |
| Formulation           | PBS with 0.02% sodium azide,50% glycerol,pH7.3.               |
| Storage               | Store at -20°C. Avoid freeze / thaw cycles.                   |

## Application Details

WB □ 1:500 - 1:2000

## Images



Western blot analysis of extracts of various cell lines, using IL2RG antibody.

## Background

---

The protein encoded by this gene is an important signaling component of many interleukin receptors, including those of interleukin -2, -4, -7 and -21, and is thus referred to as the common gamma chain. Mutations in this gene cause X-linked severe combined immunodeficiency (XSCID), as well as X-linked combined immunodeficiency (XCID), a less severe immunodeficiency disorder.

---

Note: This product is for in vitro research use only