

RPGR Antibody

Catalog No: #32465

Package Size: #32465-1 50ul #32465-2 100ul

Orders: order@signalwayantibody.com

Support: tech@signalwayantibody.com

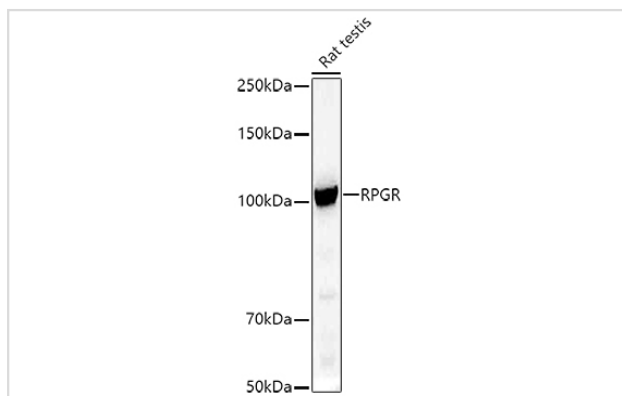
Description

Product Name	RPGR Antibody
Host Species	Rabbit
Clonality	Polyclonal
Isotype	IgG
Purification	Affinity purification
Applications	WB,IHC
Species Reactivity	Human,Mouse,Rat
Specificity	The antibody detects endogenous level of total RPGR protein.
Immunogen Type	Recombinant Protein
Immunogen Description	Recombinant fusion protein of human RPGR (NP_001030025.1).
Target Name	RPGR
Other Names	RPGR;COD1;CORDX1;CRD;PCDX;RP15;RP3;XLRP3;orf15
Accession No.	Uniprot:Q92834GeneID:6103
Uniprot	Q92834
GeneID	6103
SDS-PAGE MW	113KDa
Concentration	0.5 mg/ml
Formulation	PBS with 0.02% sodium azide,50% glycerol,pH7.3.
Storage	Store at -20°C. Avoid freeze / thaw cycles.

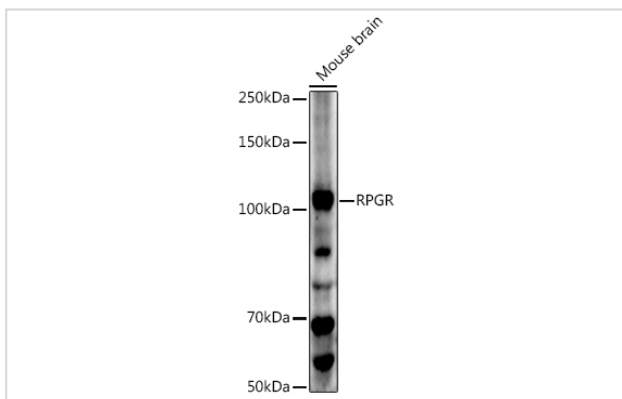
Application Details

WB □ 1:500 - 1:2000 IHC □ 1:50 - 1:200

Images



Western blot analysis of extracts of Rat testis, using RPGR antibody.



Western blot analysis of extracts of Mouse brain, using RPGR antibody.

Background

This gene encodes a protein with a series of six RCC1-like domains (RLDs), characteristic of the highly conserved guanine nucleotide exchange factors. The encoded protein is found in the Golgi body and interacts with RPGRIP1. This protein localizes to the outer segment of rod photoreceptors and is essential for their viability. Mutations in this gene have been associated with X-linked retinitis pigmentosa (XLRP). Multiple alternatively spliced transcript variants that encode different isoforms of this gene have been reported, but the full-length nature of only some have been determined.

Note: This product is for in vitro research use only