

AMBP Antibody

Catalog No: #32467

Package Size: #32467-1 50ul #32467-2 100ul

Orders: order@signalwayantibody.comSupport: tech@signalwayantibody.com

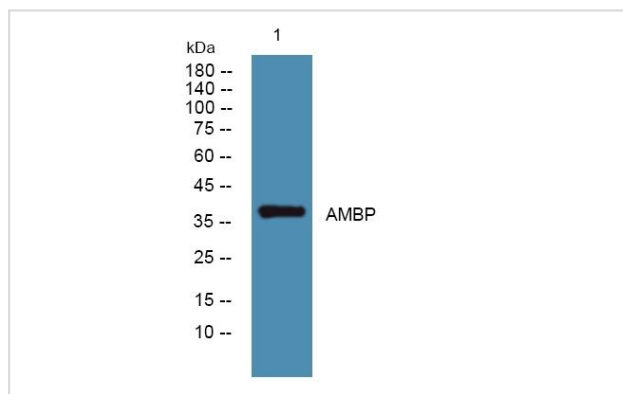
Description

Product Name	AMBP Antibody
Host Species	Rabbit
Clonality	Polyclonal
Isotype	IgG
Purification	The antibody was affinity-purified from rabbit antiserum by affinity-chromatography using epitope-specific immunogen.
Applications	WB
Species Reactivity	Human;Mouse;Rat
Specificity	The antibody detects endogenous level of total AMBP protein.
Immunogen Type	Peptide
Immunogen Description	Synthesized peptide derived from part region of human protein
Target Name	AMBP
Other Names	AMBP;A1M;EDC1;HCP;HI30;IATIL;ITI;ITIL;ITILC;UTI
Accession No.	Uniprot:P02760GeneID:259
Uniprot	P02760
GeneID	259
SDS-PAGE MW	38kDa
Concentration	1.0mg/ml
Formulation	Liquid in PBS containing 50% glycerol, and 0.02% sodium azide.
Storage	Store at -20°C. Avoid freeze / thaw cycles.

Application Details

WB 1:500-2000

Images



Western blot analysis of KB cells, using AMBP antibody 1:1000.

Background

This gene encodes a complex glycoprotein secreted in plasma. The precursor is proteolytically processed into distinct functioning proteins: alpha-1-microglobulin, which belongs to the superfamily of lipocalin transport proteins and may play a role in the regulation of inflammatory processes, and bikunin, which is a urinary trypsin inhibitor belonging to the superfamily of Kunitz-type protease inhibitors and plays an important role in many physiological and pathological processes. This gene is located on chromosome 9 in a cluster of lipocalin genes. [provided by RefSeq, Jul 2008],

Note: This product is for in vitro research use only