

## LIG1 Antibody

Catalog No: #32474

Package Size: #32474-1 50ul #32474-2 100ul

Orders: [order@signalwayantibody.com](mailto:order@signalwayantibody.com)Support: [tech@signalwayantibody.com](mailto:tech@signalwayantibody.com)

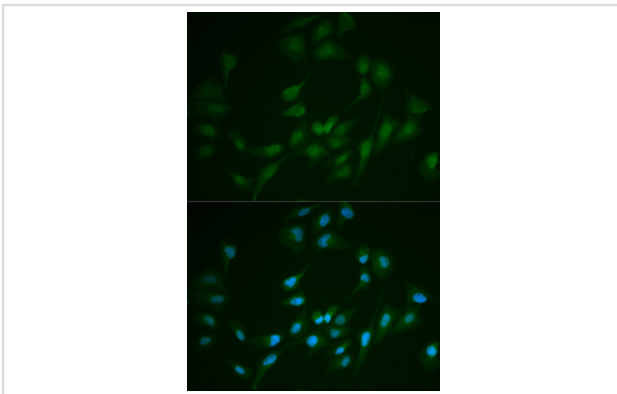
## Description

Product Name	LIG1 Antibody
Host Species	Rabbit
Clonality	Polyclonal
Isotype	IgG
Purification	Affinity purification
Applications	WB,IHC,IF
Species Reactivity	Human,Mouse
Specificity	The antibody detects endogenous level of total LIG1 protein.
Immunogen Type	Recombinant Protein
Immunogen Description	Recombinant fusion protein of human LIG1 (NP_000225.1).
Target Name	LIG1
Other Names	LIG1
Accession No.	Uniprot:P18858GeneID:3978
Uniprot	P18858
GeneID	3978
SDS-PAGE MW	140KDa
Concentration	1.0mg/ml
Formulation	PBS with 0.02% sodium azide,50% glycerol,pH7.3.
Storage	Store at -20°C. Avoid freeze / thaw cycles.

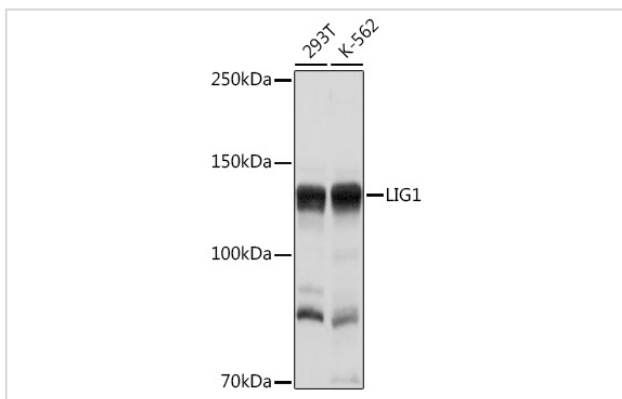
## Application Details

WB □ 1:500 - 1:2000 IHC □ 1:50 - 1:200 IF □ 1:50 - 1:200

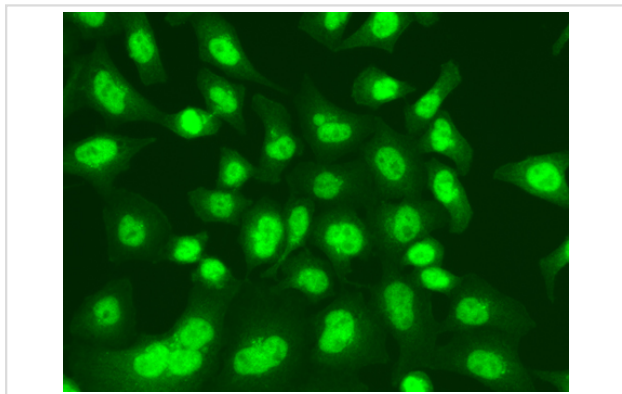
## Images



Immunofluorescence analysis of MCF-7 cells using LIG1 antibody.



Western blot analysis of extracts of various cell lines, using  
LIG1 Rabbit pAb.



Immunofluorescence analysis of A549 cells using LIG1  
antibody.

## Background

This gene encodes a member of the ATP-dependent DNA ligase protein family. The encoded protein functions in DNA replication, recombination, and the base excision repair process. Mutations in this gene that lead to DNA ligase I deficiency result in immunodeficiency and increased sensitivity to DNA-damaging agents. Disruption of this gene may also be associated with a variety of cancers. Alternative splicing results in multiple transcript variants.

Note: This product is for in vitro research use only