

## AREG Antibody

Catalog No: #32476

Package Size: #32476-1 50ul #32476-2 100ul

Orders: order@signalwayantibody.com

Support: tech@signalwayantibody.com

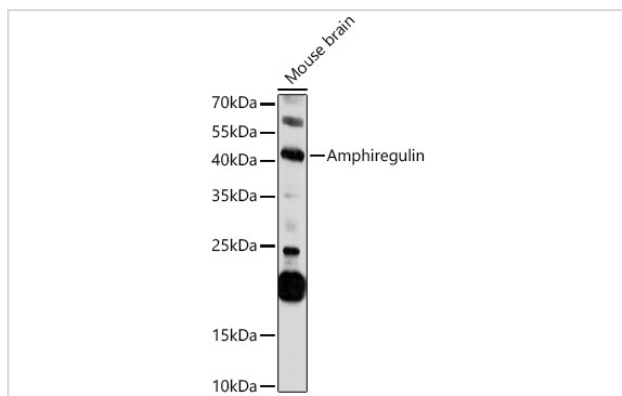
## Description

Product Name	AREG Antibody
Host Species	Rabbit
Clonality	Polyclonal
Isotype	IgG
Purification	Affinity purification
Applications	WB,IF
Species Reactivity	Human,Mouse,Rat
Specificity	The antibody detects endogenous level of total AREG protein.
Immunogen Type	Recombinant Protein
Immunogen Description	Recombinant fusion protein of human Amphiregulin (NP_001648.1).
Target Name	AREG
Other Names	AREG;AR;AREGB;CRDGF;SDGF;amphiregulin
Accession No.	Uniprot:P15514GeneID:374
Uniprot	P15514
GeneID	374
SDS-PAGE MW	43KDa
Concentration	1.0mg/ml
Formulation	PBS with 0.02% sodium azide,50% glycerol,pH7.3.
Storage	Store at -20°C. Avoid freeze / thaw cycles.

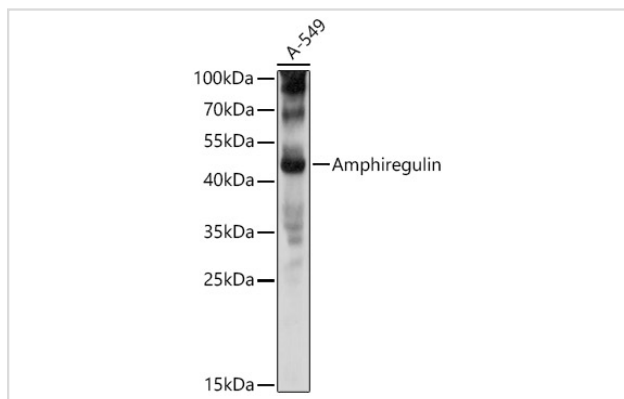
## Application Details

WB □ 1:500 - 1:2000 IF □ 1:50 - 1:200

## Images



Western blot analysis of extracts of Mouse brain, using Amphiregulin antibody.



Western blot analysis of extracts of A-549 cells, using Amphiregulin antibody.

## Background

The protein encoded by this gene is a member of the epidermal growth factor family. It is an autocrine growth factor as well as a mitogen for astrocytes, Schwann cells and fibroblasts. It is related to epidermal growth factor (EGF) and transforming growth factor alpha (TGF-alpha). The protein interacts with the EGF/TGF-alpha receptor to promote the growth of normal epithelial cells, and it inhibits the growth of certain aggressive carcinoma cell lines. It also functions in mammary gland, oocyte and bone tissue development. This gene is associated with a psoriasis-like skin phenotype, and is also associated with other pathological disorders, including various types of cancers and inflammatory conditions.

Note: This product is for in vitro research use only