

## GLB1 Antibody

Catalog No: #32478

Package Size: #32478-1 50ul #32478-2 100ul

Orders: [order@signalwayantibody.com](mailto:order@signalwayantibody.com)Support: [tech@signalwayantibody.com](mailto:tech@signalwayantibody.com)

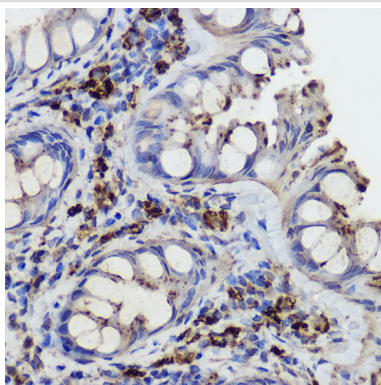
## Description

Product Name	GLB1 Antibody
Host Species	Rabbit
Clonality	Polyclonal
Isotype	IgG
Purification	Affinity purification
Applications	WB,IHC,IF
Species Reactivity	Human,Mouse,Rat
Specificity	The antibody detects endogenous level of total GLB1 protein.
Immunogen Type	Recombinant Protein
Immunogen Description	Recombinant fusion protein of human GLB1 (NP_001073279.1).
Target Name	GLB1
Other Names	GLB1;EBP;ELNR1;MPS4B
Accession No.	Uniprot:P16278GenelD:2720
Uniprot	P16278
GenelD	2720
SDS-PAGE MW	65KDa
Concentration	1.0mg/ml
Formulation	PBS with 0.02% sodium azide,50% glycerol,pH7.3.
Storage	Store at -20°C. Avoid freeze / thaw cycles.

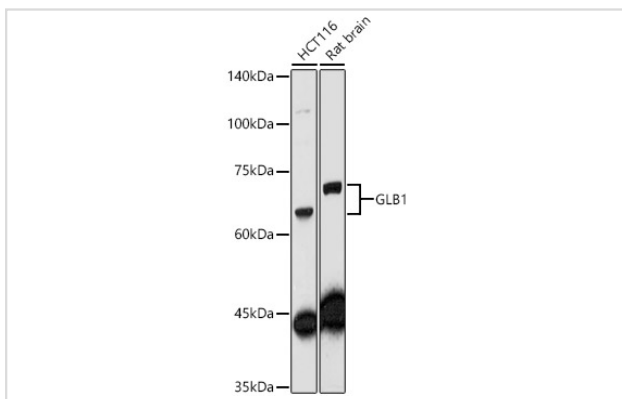
## Application Details

WB 1:500 - 1:2000 IHC 1:50 - 1:200 IF 1:50 - 1:200

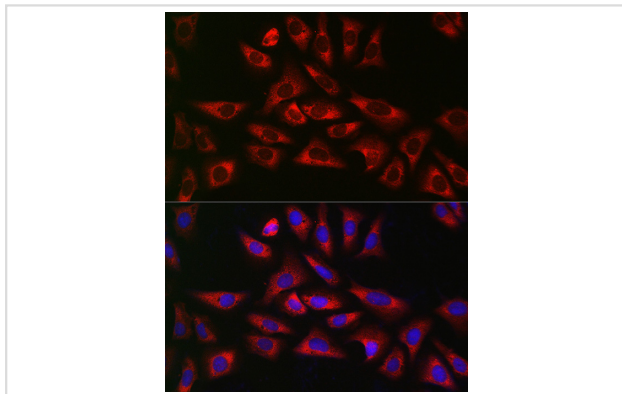
## Images



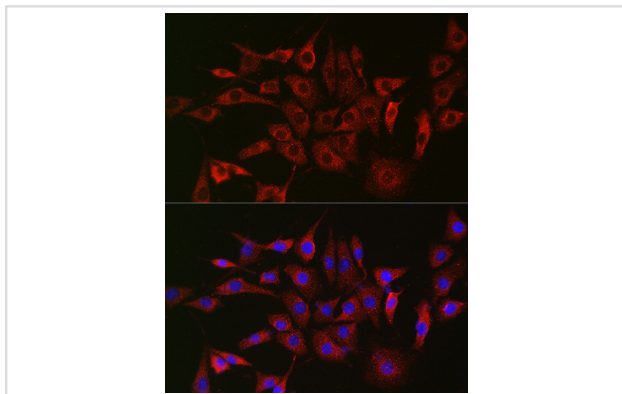
Immunohistochemistry of paraffin-embedded human colon using GLB1 Rabbit pAb.



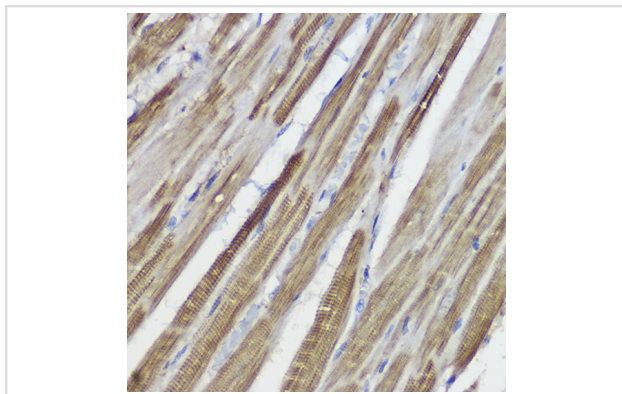
Western blot analysis of extracts of various cell lines, using GLB1 antibody.



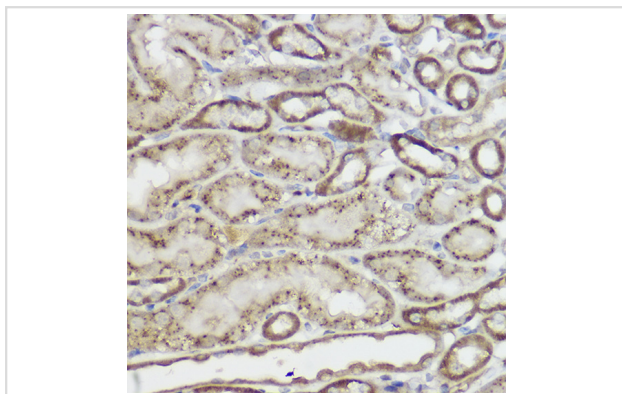
Immunofluorescence analysis of U2OS cells using GLB1 Rabbit pAb.



Immunofluorescence analysis of NIH/3T3 cells using GLB1 Rabbit pAb.



Immunohistochemistry of paraffin-embedded rat heart using GLB1 Rabbit pAb.



Immunohistochemistry of paraffin-embedded mouse kidney using GLB1 Rabbit pAb.

## Background

---

This gene encodes a member of the glycosyl hydrolase 35 family of proteins. Alternative splicing results in multiple transcript variants, at least one of which encodes a preproprotein that is proteolytically processed to generate the mature lysosomal enzyme. This enzyme catalyzes the hydrolysis of a terminal beta-linked galactose residue from ganglioside substrates and other glycoconjugates. Mutations in this gene may result in GM1-gangliosidosis and Morquio B syndrome.

---

Note: This product is for in vitro research use only