

ATG16L1 Antibody

Catalog No: #32481

Package Size: #32481-1 50ul #32481-2 100ul

Orders: order@signalwayantibody.comSupport: tech@signalwayantibody.com

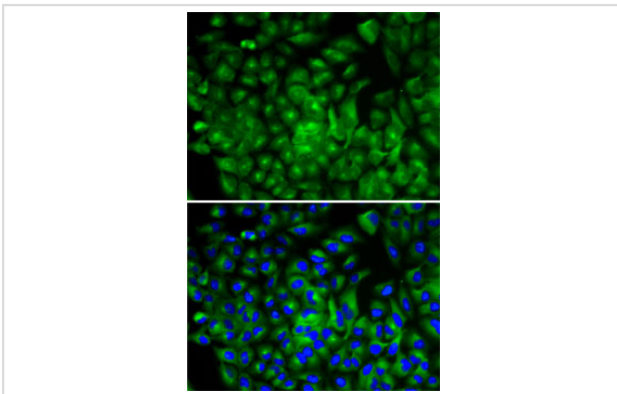
Description

Product Name	ATG16L1 Antibody
Host Species	Rabbit
Clonality	Polyclonal
Isotype	IgG
Purification	Affinity purification
Applications	WB,IHC,IF
Species Reactivity	Human,Mouse,Rat
Specificity	The antibody detects endogenous level of total ATG16L1 protein.
Immunogen Type	Recombinant Protein
Immunogen Description	Recombinant fusion protein of human ATG16L1 (NP_110430.5).
Target Name	ATG16L1
Other Names	ATG16L1;APG16L;ATG16A;ATG16L;IBD10;WDR30
Accession No.	Uniprot:Q676U5GeneID:55054
Uniprot	Q676U5
GeneID	55054
SDS-PAGE MW	66KDa/68KDa
Concentration	1.0mg/ml
Formulation	PBS with 0.02% sodium azide,50% glycerol,pH7.3.
Storage	Store at -20°C. Avoid freeze / thaw cycles.

Application Details

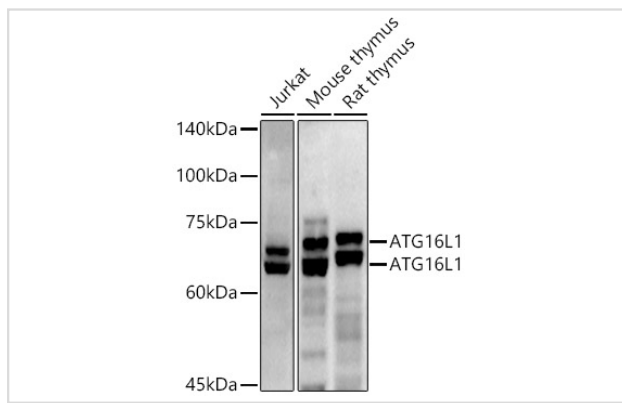
WB \square 1:500 - 1:2000 IHC \square 1:50 - 1:200 IF \square 1:50 - 1:200

Images



Immunofluorescence analysis of A-549 cells using ATG16L1 antibody.

Western blot analysis of extracts of various cell lines, using ATG16L1 antibody.



Background

The protein encoded by this gene is part of a large protein complex that is necessary for autophagy, the major process by which intracellular components are targeted to lysosomes for degradation. Defects in this gene are a cause of susceptibility to inflammatory bowel disease type 10 (IBD10). Several transcript variants encoding different isoforms have been found for this gene.

Note: This product is for in vitro research use only