

SLC25A4 Antibody

Catalog No: #32484

Package Size: #32484-1 50ul #32484-2 100ul

Orders: order@signalwayantibody.com

Support: tech@signalwayantibody.com

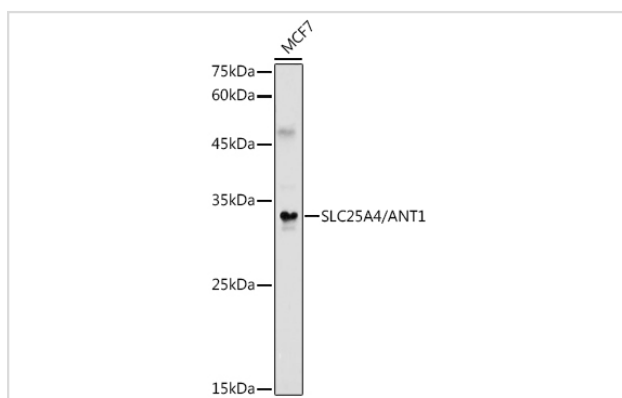
Description

Product Name	SLC25A4 Antibody
Host Species	Rabbit
Clonality	Polyclonal
Isotype	IgG
Purification	Affinity purification
Applications	WB,IF
Species Reactivity	Human,Mouse,Rat
Specificity	The antibody detects endogenous level of total SLC25A4 protein.
Immunogen Type	Recombinant Protein
Immunogen Description	Recombinant fusion protein of human SLC25A4/ANT1 (NP_001142.2).
Target Name	SLC25A4
Other Names	SLC25A4;AAC1;ANT;ANT 1;ANT1;MTDPS12;MTDPS12A;PEO2;PEO3;PEOA2;T1
Accession No.	Uniprot:P12235GeneID:291
Uniprot	P12235
GeneID	291
SDS-PAGE MW	33KDa
Concentration	1.0mg/ml
Formulation	PBS with 0.02% sodium azide,50% glycerol,pH7.3.
Storage	Store at -20°C. Avoid freeze / thaw cycles.

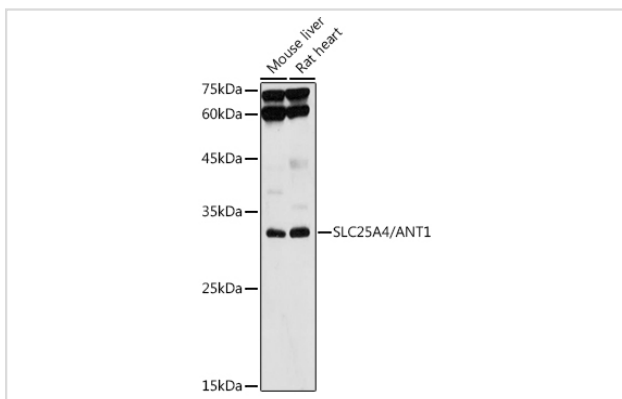
Application Details

WB □ 1:500 - 1:2000 IF □ 1:50 - 1:200

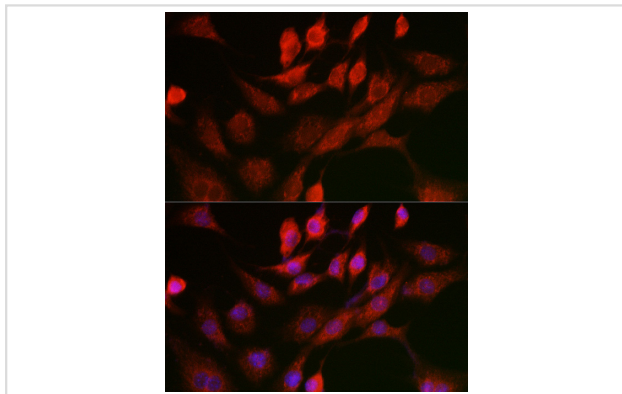
Images



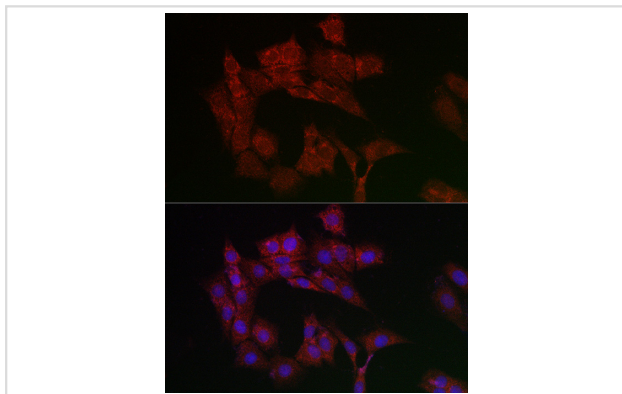
Western blot analysis of extracts of MCF7 cells, using SLC25A4/ANT1 antibody.



Western blot analysis of extracts of various cell lines, using SLC25A4/ANT1 antibody.



Immunofluorescence analysis of NIH/3T3 cells using SLC25A4/ANT1 Rabbit pAb.



Immunofluorescence analysis of PC-12 cells using SLC25A4/ANT1 Rabbit pAb.

Background

This gene is a member of the mitochondrial carrier subfamily of solute carrier protein genes. The product of this gene functions as a gated pore that translocates ADP from the cytoplasm into the mitochondrial matrix and ATP from the mitochondrial matrix into the cytoplasm. The protein forms a homodimer embedded in the inner mitochondria membrane. Mutations in this gene have been shown to result in autosomal dominant progressive external ophthalmoplegia and familial hypertrophic cardiomyopathy.

Note: This product is for in vitro research use only