

LIG3 Antibody

Catalog No: #32487

Package Size: #32487-1 50ul #32487-2 100ul

Orders: order@signalwayantibody.comSupport: tech@signalwayantibody.com

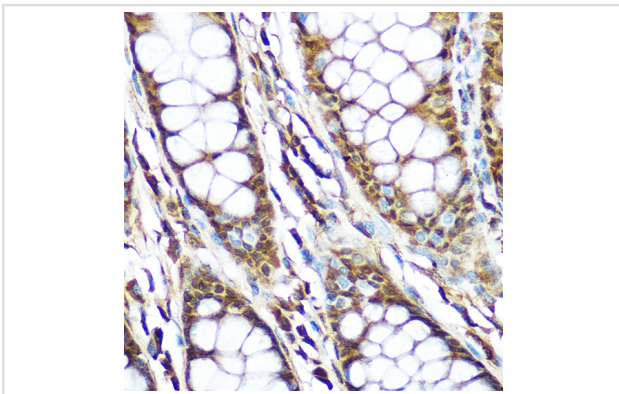
Description

Product Name	LIG3 Antibody
Host Species	Rabbit
Clonality	Polyclonal
Isotype	IgG
Purification	Affinity purification
Applications	WB,IHC,IF
Species Reactivity	Human,Mouse,Rat
Specificity	The antibody detects endogenous level of total LIG3 protein.
Immunogen Type	Recombinant Protein
Immunogen Description	Recombinant fusion protein of human LIG3 (NP_039269.2).
Target Name	LIG3
Other Names	LIG3;LIG2
Accession No.	Uniprot:P49916GeneID:3980
Uniprot	P49916
GeneID	3980
SDS-PAGE MW	105KDa
Concentration	1.0mg/ml
Formulation	PBS with 0.02% sodium azide,50% glycerol,pH7.3.
Storage	Store at -20°C. Avoid freeze / thaw cycles.

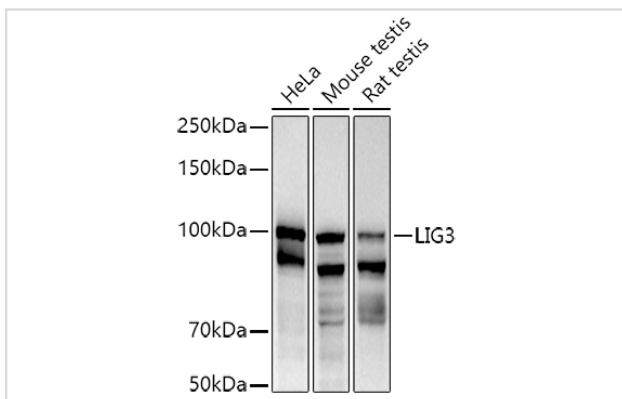
Application Details

WB □ 1:500 - 1:2000 IHC □ 1:50 - 1:200 IF □ 1:50 - 1:200

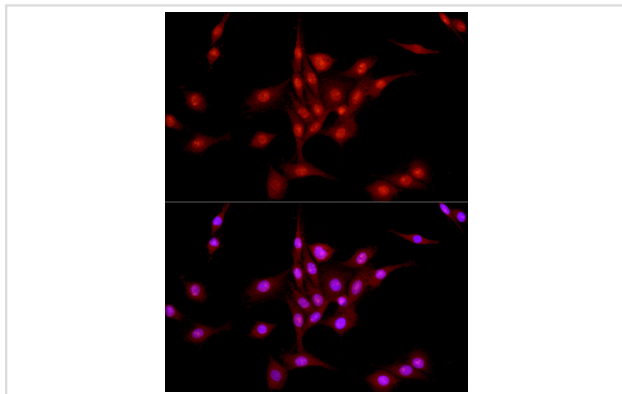
Images



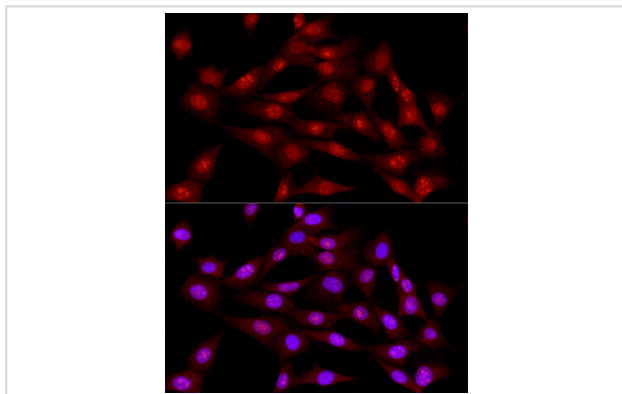
Immunohistochemistry of paraffin-embedded human colon using LIG3 Rabbit pAb.



Western blot analysis of extracts of various cell lines, using .



Immunofluorescence analysis of PC-12 cells using LIG3 Rabbit pAb.



Immunofluorescence analysis of NIH/3T3 cells using LIG3 Rabbit pAb.

Background

This gene is a member of the DNA ligase family. Each member of this family encodes a protein that catalyzes the joining of DNA ends but they each have a distinct role in DNA metabolism. The protein encoded by this gene is involved in excision repair and is located in both the mitochondria and nucleus, with translation initiation from the upstream start codon allowing for transport to the mitochondria and translation initiation from a downstream start codon allowing for transport to the nucleus. Additionally, alternate transcriptional splice variants, encoding different isoforms, have been characterized.

Note: This product is for in vitro research use only