

CADM1 Antibody

Catalog No: #32488

Package Size: #32488-1 50ul #32488-2 100ul

Orders: order@signalwayantibody.comSupport: tech@signalwayantibody.com

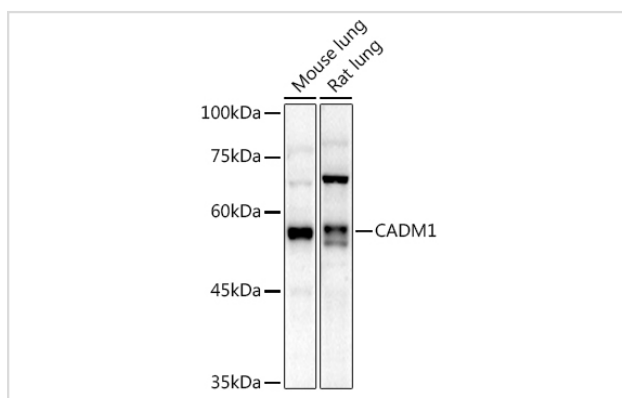
Description

Product Name	CADM1 Antibody
Host Species	Rabbit
Clonality	Polyclonal
Isotype	IgG
Purification	Affinity purification
Applications	WB
Species Reactivity	Human,Mouse,Rat
Specificity	The antibody detects endogenous level of total CADM1 protein.
Immunogen Type	Recombinant Protein
Immunogen Description	Recombinant fusion protein of human CADM1 (NP_001091987.1).
Target Name	CADM1
Other Names	CADM1;BL2;IGSF4;IGSF4A;NECL2;Necl-2;RA175;ST17;SYNCAM;TSLC1;sTSLC-1;sgIGSF;synCAM1
Accession No.	Uniprot:Q9BY67GeneID:23705
Uniprot	Q9BY67
GeneID	23705
SDS-PAGE MW	50KDa
Concentration	1.0mg/ml
Formulation	PBS with 0.02% sodium azide,50% glycerol,pH7.3.
Storage	Store at -20°C. Avoid freeze / thaw cycles.

Application Details

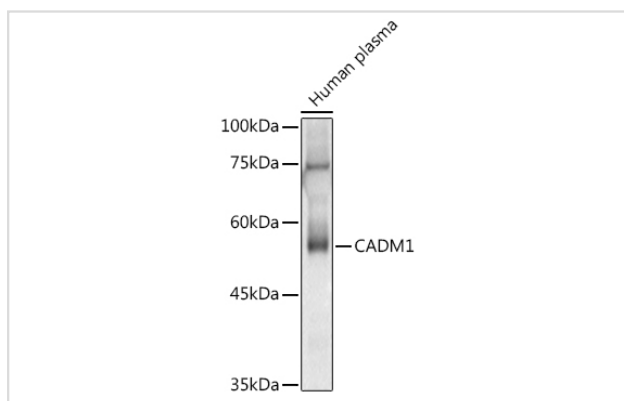
WB □ 1:500 - 1:2000

Images



Western blot analysis of extracts of various cell lines, using CADM1 antibody.

Western blot analysis of extracts of Human plasma, using CADM1 antibody.



Note: This product is for in vitro research use only