

LMNB1 Antibody

Catalog No: #32494

Package Size: #32494-1 50ul #32494-2 100ul

Orders: order@signalwayantibody.com

Support: tech@signalwayantibody.com

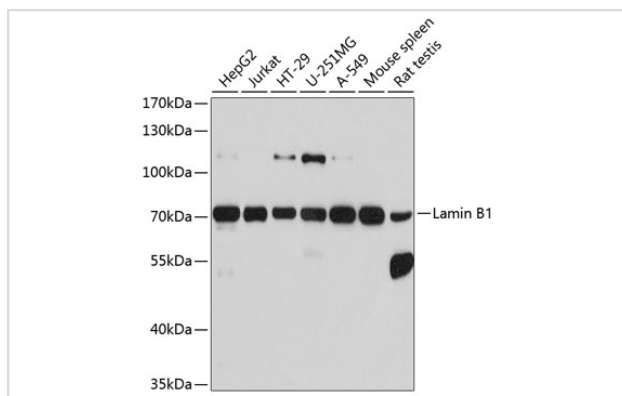
Description

Product Name	LMNB1 Antibody
Host Species	Rabbit
Clonality	Polyclonal
Purification	Antibodies were purified by affinity purification using immunogen.
Applications	WB,IHC,IF
Species Reactivity	Human,Mouse,Rat
Specificity	The antibody detects endogenous level of total LMNB1 protein.
Immunogen Type	Recombinant Protein
Immunogen Description	Recombinant protein of human LMNB1.
Target Name	LMNB1
Other Names	LMN; ADLD; LMN2; LMNB;
Accession No.	Swiss-Prot:P20700NCBI Gene ID:4001
Uniprot	P20700
GeneID	4001;
SDS-PAGE MW	66KD
Concentration	1.0mg/ml
Formulation	Supplied at 1.0mg/mL in phosphate buffered saline (without Mg ²⁺ and Ca ²⁺), pH 7.4, 150mM NaCl, 0.02% sodium azide and 50% glycerol.
Storage	Store at -20°C

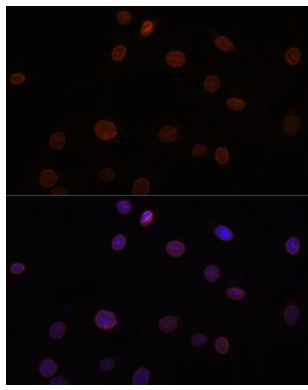
Application Details

WB □ 1:500 - 1:2000 IHC □ 1:50 - 1:200 IF □ 1:50 - 1:200

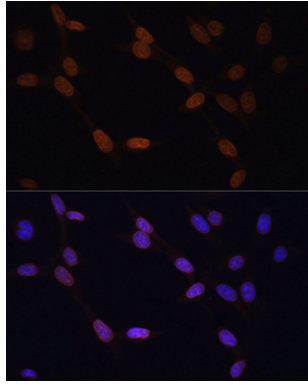
Images



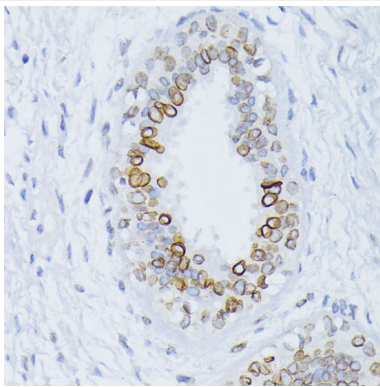
Western blot analysis of extracts of various cell lines, using Lamin B1 at 1:1000 dilution.



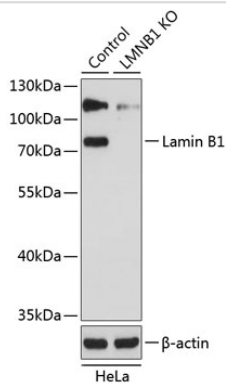
Immunofluorescence analysis of C6 cells using Lamin B1 at dilution of 1:100. Blue: DAPI for nuclear staining.



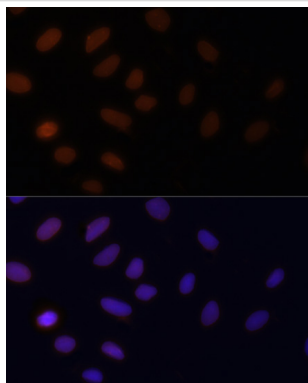
Immunofluorescence analysis of NIH/3T3 cells using Lamin B1 at dilution of 1:100. Blue: DAPI for nuclear staining.



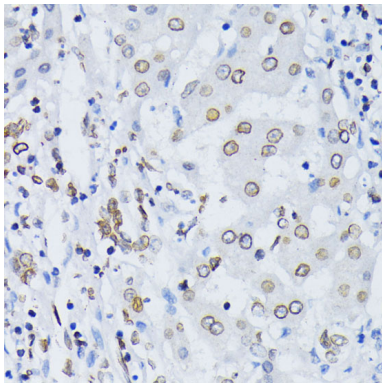
Immunohistochemistry of paraffin-embedded human breast cancer using [KO] Lamin B1 at dilution of 1:100 (40x lens).



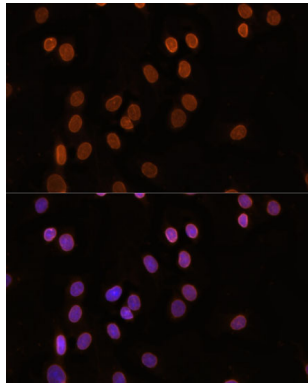
Western blot analysis of extracts from normal (control) and Lamin B1 knockout (KO) HeLa cells, using Lamin B1 at 1:1000 dilution.



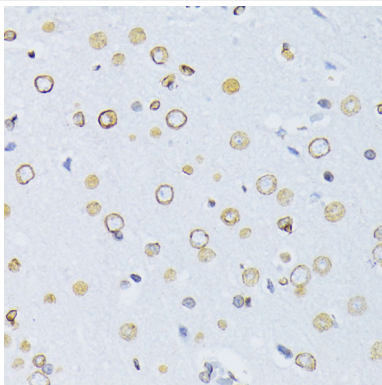
Immunofluorescence analysis of U2OS cells using Lamin B1 at dilution of 1:100. Blue: DAPI for nuclear staining.



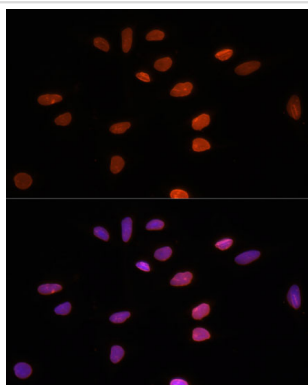
Immunohistochemistry of paraffin-embedded human liver cancer using [KO] Lamin B1 at dilution of 1:100 (40x lens).



Immunofluorescence analysis of C6 cells using Lamin B1 Polyclonal at dilution of 1:100 (40x lens). Blue: DAPI for nuclear staining.



Immunohistochemistry of paraffin-embedded rat brain using [KO] Lamin B1 at dilution of 1:100 (40x lens).



Immunofluorescence analysis of U-2 OS cells using Lamin B1 Polyclonal at dilution of 1:100 (40x lens). Blue: DAPI for nuclear staining.

Background

The nuclear lamina consists of a two-dimensional matrix of proteins located next to the inner nuclear membrane. The lamin family of proteins make up the matrix and are highly conserved in evolution. During mitosis, the lamina matrix is reversibly disassembled as the lamin proteins are phosphorylated. Lamin proteins are thought to be involved in nuclear stability, chromatin structure and gene expression. Vertebrate lamins consist of two types, A and B. This gene encodes one of the two B type proteins, B1. Alternative splicing results in transcript variants and a duplication of this gene is associated with autosomal dominant adult-onset leukodystrophy (ADLD).

Note: This product is for in vitro research use only