

## DLC1 Antibody

Catalog No: #32499

Package Size: #32499-1 50ul #32499-2 100ul

Orders: order@signalwayantibody.com

Support: tech@signalwayantibody.com

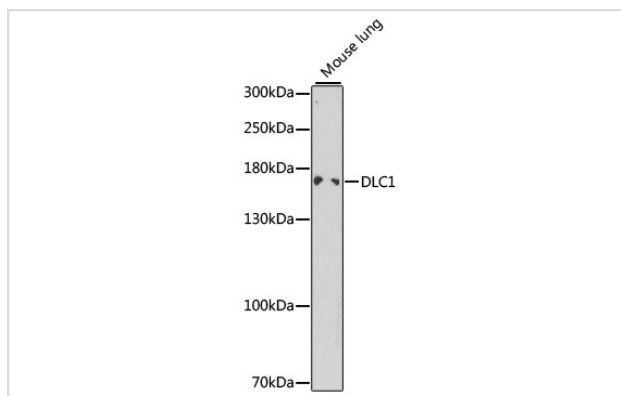
## Description

Product Name	DLC1 Antibody
Host Species	Rabbit
Clonality	Polyclonal
Isotype	IgG
Purification	Affinity purification
Applications	WB
Species Reactivity	Mouse,Rat
Specificity	The antibody detects endogenous level of total DLC1 protein.
Immunogen Type	Recombinant Protein
Immunogen Description	Recombinant fusion protein of human DLC1 (NP_079043.3).
Target Name	DLC1
Other Names	DLC1;ARHGAP7;HP;STARD12;p122-RhoGAP
Accession No.	Uniprot:Q96QB1GeneID:10395
Uniprot	Q96QB1
GeneID	10395
SDS-PAGE MW	171kDa
Concentration	1.0mg/ml
Formulation	PBS with 0.02% sodium azide,50% glycerol,pH7.3.
Storage	Store at -20°C. Avoid freeze / thaw cycles.

## Application Details

WB 1:500 - 1:2000

## Images



Western blot analysis of extracts of mouse lung, using DLC1 antibody.

## Background

---

This gene encodes a GTPase-activating protein (GAP) that is a member of the rhoGAP family of proteins which play a role in the regulation of small GTP-binding proteins. GAP family proteins participate in signaling pathways that regulate cell processes involved in cytoskeletal changes. This gene functions as a tumor suppressor gene in a number of common cancers, including prostate, lung, colorectal, and breast cancers. Multiple transcript variants due to alternative promoters and alternative splicing have been found for this gene.

---

Note: This product is for in vitro research use only