

## CD151 Antibody

Catalog No: #32504

Package Size: #32504-1 50ul #32504-2 100ul

Orders: [order@signalwayantibody.com](mailto:order@signalwayantibody.com)Support: [tech@signalwayantibody.com](mailto:tech@signalwayantibody.com)

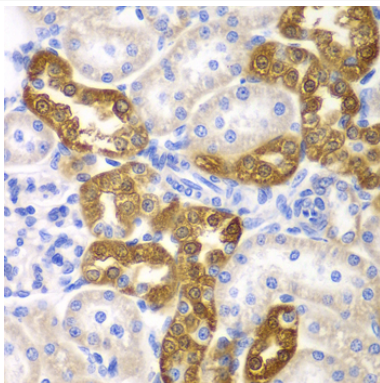
## Description

Product Name	CD151 Antibody
Host Species	Rabbit
Clonality	Polyclonal
Purification	Antibodies were purified by affinity purification using immunogen.
Applications	WB,IHC
Species Reactivity	Human,Mouse,Rat
Specificity	The antibody detects endogenous level of total CD151 protein.
Immunogen Type	Recombinant Protein
Immunogen Description	Recombinant protein of human CD151.
Target Name	CD151
Other Names	GP27; MER2; RAPH; SFA1; PETA-3
Accession No.	Swiss-Prot:P48509NCBI Gene ID:977
Uniprot	P48509
GeneID	977;
SDS-PAGE MW	28KD
Concentration	1.0mg/ml
Formulation	Supplied at 1.0mg/mL in phosphate buffered saline (without Mg <sup>2+</sup> and Ca <sup>2+</sup> ), pH 7.4, 150mM NaCl, 0.02% sodium azide and 50% glycerol.
Storage	Store at -20°C

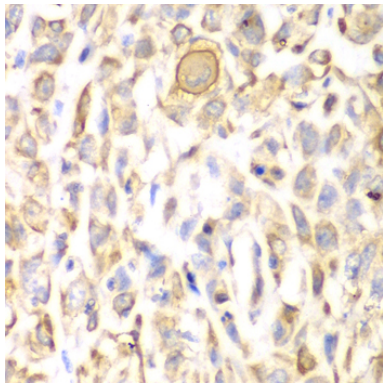
## Application Details

WB □ 1:500 - 1:2000 IHC □ 1:50 - 1:200

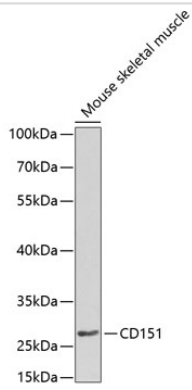
## Images



Immunohistochemistry of paraffin-embedded rat kidney using CD151 at dilution of 1:200 (40x lens).



Immunohistochemistry of paraffin-embedded human lung cancer using CD151 at dilution of 1:200 (40x lens).



Western blot analysis of extracts of mouse skeletal muscle, using CD151 at 1:1000 dilution.

## Background

The protein encoded by this gene is a member of the transmembrane 4 superfamily, also known as the tetraspanin family. Most of these members are cell-surface proteins that are characterized by the presence of four hydrophobic domains. The proteins mediate signal transduction events that play a role in the regulation of cell development, activation, growth and motility. This encoded protein is a cell surface glycoprotein that is known to complex with integrins and other transmembrane 4 superfamily proteins. It is involved in cellular processes including cell adhesion and may regulate integrin trafficking and/or function. This protein enhances cell motility, invasion and metastasis of cancer cells. Multiple alternatively spliced transcript variants that encode the same protein have been described for this gene.

Note: This product is for in vitro research use only