

POLI Antibody

Catalog No: #32510

Package Size: #32510-1 50ul #32510-2 100ul

Orders: order@signalwayantibody.com

Support: tech@signalwayantibody.com

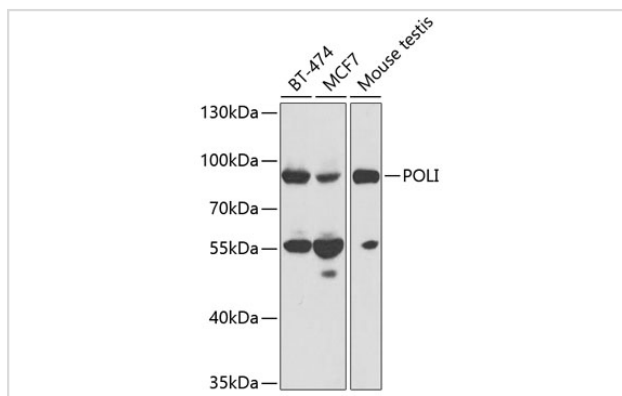
Description

Product Name	POLI Antibody
Host Species	Rabbit
Clonality	Polyclonal
Purification	Antibodies were purified by affinity purification using immunogen.
Applications	WB
Species Reactivity	Human,Mouse
Specificity	The antibody detects endogenous level of total POLI protein.
Immunogen Type	Recombinant Protein
Immunogen Description	Recombinant protein of human POLI.
Target Name	POLI
Other Names	RAD30B; RAD30B;
Accession No.	Swiss-Prot:Q9UNA4NCBI Gene ID:11201
Uniprot	Q9UNA4
GeneID	11201;
SDS-PAGE MW	80KD
Concentration	1.0mg/ml
Formulation	Supplied at 1.0mg/mL in phosphate buffered saline (without Mg ²⁺ and Ca ²⁺), pH 7.4, 150mM NaCl, 0.02% sodium azide and 50% glycerol.
Storage	Store at -20°C

Application Details

WB □ 1:500 - 1:2000

Images



Western blot analysis of extracts of various cell lines, using POLI at 1:1000 dilution.

Background

Mammalian Pol I owns an unusual combination of properties: it is stimulated by Mn²⁺ ions, can bypass some DNA lesions and misincorporates B¹⁹GB'± opposite template B¹⁹TB'± more frequently than incorporates the correct B¹⁹A.B'±. It also was shown to possess dRP lyase activity. In addition, Pol I is much more efficient in the presence of Mn²⁺ in comparison to Mg²⁺. It has been proposed that POLI involves in immunoglobulin somatic hypermutation (SHM), bypass of deaminated cytosines, several adducts of the purine bases, DNA strand crosslinks and is involved in DNA repair under oxidative stress.

Note: This product is for in vitro research use only