

TCP1 Antibody

Catalog No: #32517

Package Size: #32517-1 50ul #32517-2 100ul

Orders: order@signalwayantibody.comSupport: tech@signalwayantibody.com

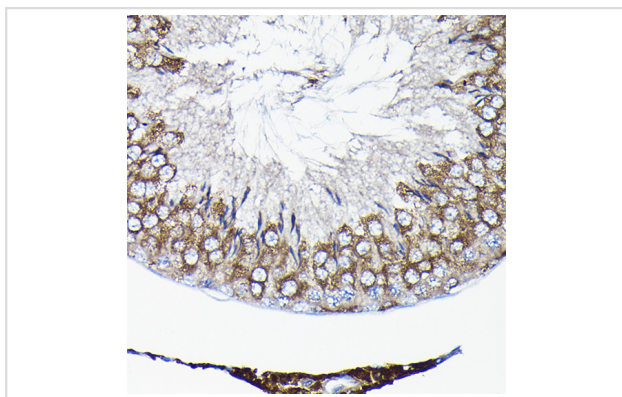
Description

Product Name	TCP1 Antibody
Host Species	Rabbit
Clonality	Polyclonal
Isotype	IgG
Purification	Affinity purification
Applications	WB,IHC
Species Reactivity	Human,Mouse,Rat
Specificity	The antibody detects endogenous level of total TCP1 protein.
Immunogen Type	Recombinant Protein
Immunogen Description	Recombinant fusion protein of human TCP1 (NP_110379.2).
Target Name	TCP1
Other Names	TCP1;CCT-alpha;CCT1;CCTa;D6S230E;TCP-1-alpha
Accession No.	Uniprot:P17987GenelD:6950
Uniprot	P17987
GenelD	6950
SDS-PAGE MW	60KDa
Concentration	1.0mg/ml
Formulation	PBS with 0.02% sodium azide,50% glycerol,pH7.3.
Storage	Store at -20°C. Avoid freeze / thaw cycles.

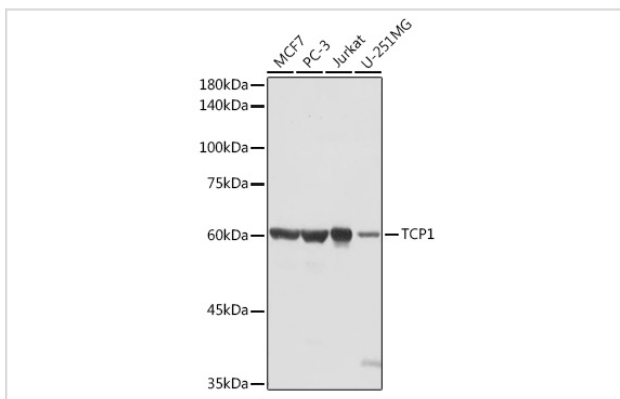
Application Details

WB □ 1:500 - 1:2000 IHC □ 1:50 - 1:200

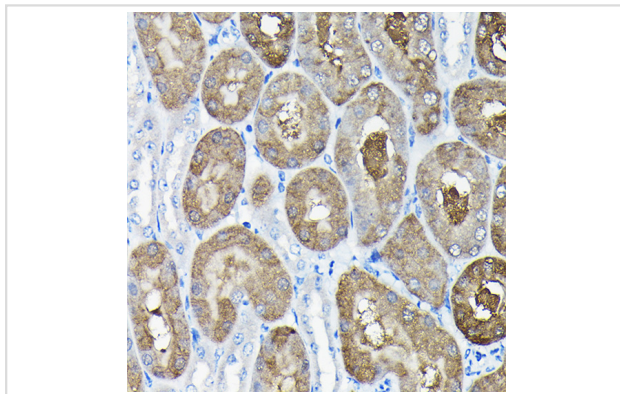
Images



Immunohistochemistry of paraffin-embedded rat testis using TCP1 Rabbit pAb.



Western blot analysis of extracts of various cell lines, using TCP1 antibody.



Immunohistochemistry of paraffin-embedded mouse kidney using TCP1 Rabbit pAb.

Background

The protein encoded by this gene is a molecular chaperone that is a member of the chaperonin containing TCP1 complex (CCT), also known as the TCP1 ring complex (TRiC). This complex consists of two identical stacked rings, each containing eight different proteins. Unfolded polypeptides enter the central cavity of the complex and are folded in an ATP-dependent manner. The complex folds various proteins, including actin and tubulin. Alternate transcriptional splice variants of this gene, encoding different isoforms, have been characterized. In addition, three pseudogenes that appear to be derived from this gene have been found.

Note: This product is for in vitro research use only