

TRIM21 Antibody

Catalog No: #32520

Package Size: #32520-1 50ul #32520-2 100ul

Orders: order@signalwayantibody.comSupport: tech@signalwayantibody.com

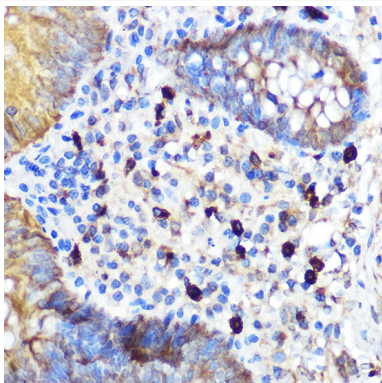
Description

Product Name	TRIM21 Antibody
Host Species	Rabbit
Clonality	Polyclonal
Isotype	IgG
Purification	Affinity purification
Applications	WB,IHC,IF
Species Reactivity	Human,Mouse,Rat
Specificity	The antibody detects endogenous level of total TRIM21 protein.
Immunogen Type	Recombinant Protein
Immunogen Description	Recombinant fusion protein of human TRIM21 (NP_003132.2).
Target Name	TRIM21
Other Names	TRIM21;RNF81;RO52;Ro/SSA;SSA;SSA1
Accession No.	Uniprot:P19474GenelD:6737
Uniprot	P19474
GenelD	6737
SDS-PAGE MW	50KDa
Concentration	1.0mg/ml
Formulation	PBS with 0.02% sodium azide,50% glycerol,pH7.3.
Storage	Store at -20°C. Avoid freeze / thaw cycles.

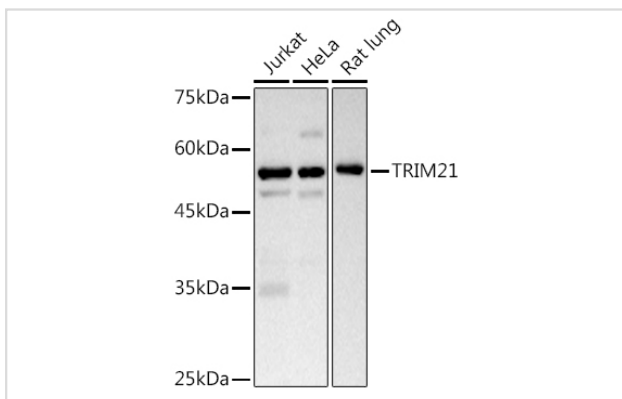
Application Details

WB 1:500 - 1:2000 IHC 1:10 - 1:100 IF 1:10 - 1:100

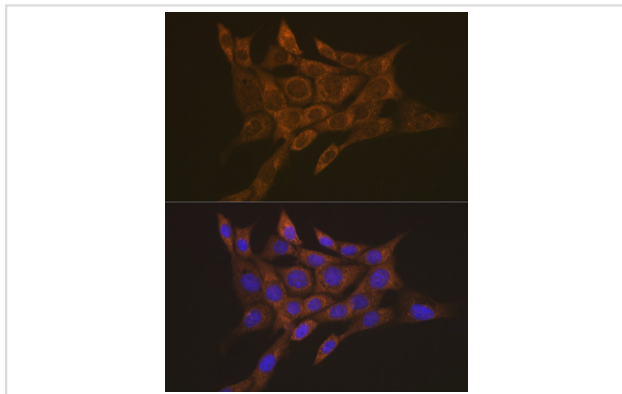
Images



Immunohistochemistry of paraffin-embedded human appendix using TRIM21 Rabbit pAb.



Western blot analysis of extracts of various cell lines, using TRIM21 antibody.



Immunofluorescence analysis of NIH-3T3 cells using TRIM21 Rabbit pAb.

Background

This gene encodes a member of the tripartite motif (TRIM) family. The TRIM motif includes three zinc-binding domains, a RING, a B-box type 1 and a B-box type 2, and a coiled-coil region. The encoded protein is part of the RoSSA ribonucleoprotein, which includes a single polypeptide and one of four small RNA molecules. The RoSSA particle localizes to both the cytoplasm and the nucleus. RoSSA interacts with autoantigens in patients with Sjogren syndrome and systemic lupus erythematosus. Alternatively spliced transcript variants for this gene have been described but the full-length nature of only one has been determined.

Note: This product is for in vitro research use only