

## HIST2H2BE Antibody

Catalog No: #32521

Package Size: #32521-1 50ul #32521-2 100ul

Orders: [order@signalwayantibody.com](mailto:order@signalwayantibody.com)Support: [tech@signalwayantibody.com](mailto:tech@signalwayantibody.com)

## Description

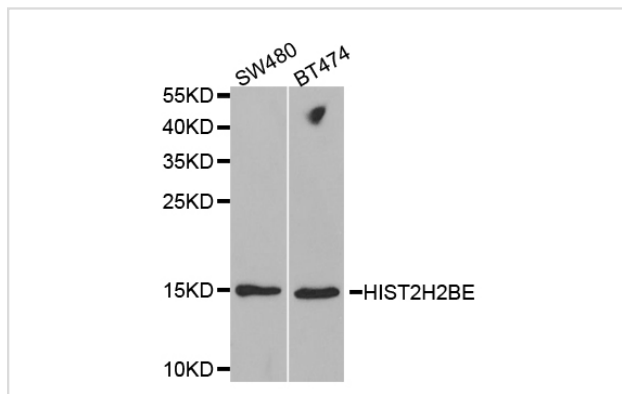
Product Name	HIST2H2BE Antibody
Host Species	Rabbit
Clonality	Polyclonal
Purification	Antibodies were purified by affinity purification using immunogen.
Applications	WB IHC
Species Reactivity	Hu Ms Rt
Specificity	The antibody detects endogenous level of total HIST2H2BE protein.
Immunogen Type	Recombinant Protein
Immunogen Description	Recombinant protein of human HIST2H2BE.
Target Name	HIST2H2BE
Other Names	H2B; H2BQ; GL105; H2B.1; H2BFQ
Accession No.	Swiss-Prot:Q16778NCBI Gene ID:8349
Uniprot	Q16778
GeneID	8349;
SDS-PAGE MW	14KD
Concentration	1.0mg/ml
Formulation	Supplied at 1.0mg/mL in phosphate buffered saline (without Mg <sup>2+</sup> and Ca <sup>2+</sup> ), pH 7.4, 150mM NaCl, 0.02% sodium azide and 50% glycerol.
Storage	Store at -20°C

## Application Details

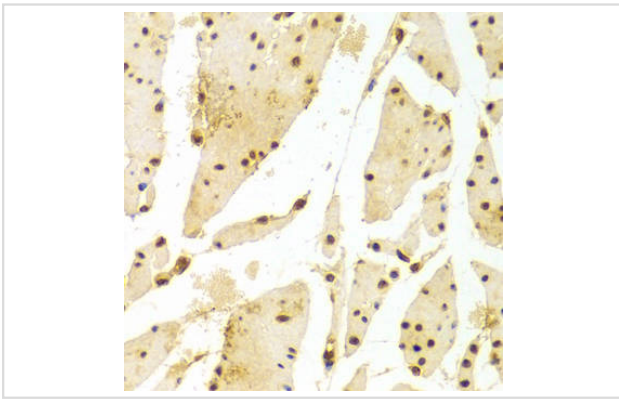
Western blotting: 1:500 - 1:2000

Immunohistochemistry: 1:50 - 1:100

## Images



Western blot analysis of extracts of various cell lines, using HIST2H2BE antibody.



Immunohistochemistry of paraffin-embedded Human esophageal using HIST2H2BE antibody at dilution of 1:100 (x400 lens).

## Background

Histones are basic nuclear proteins that are responsible for the nucleosome structure of the chromosomal fiber in eukaryotes. Two molecules of each of the four core histones (H2A, H2B, H3, and H4) form an octamer, around which approximately 146 bp of DNA is wrapped in repeating units, called nucleosomes. The linker histone, H1, interacts with linker DNA between nucleosomes and functions in the compaction of chromatin into higher order structures. This gene encodes a member of the histone H2B family, and generates two transcripts through the use of the conserved stem-loop termination motif, and the polyA addition motif.

Note: This product is for in vitro research use only