

## MSMB Antibody

Catalog No: #32522

Package Size: #32522-1 50ul #32522-2 100ul

Orders: [order@signalwayantibody.com](mailto:order@signalwayantibody.com)Support: [tech@signalwayantibody.com](mailto:tech@signalwayantibody.com)

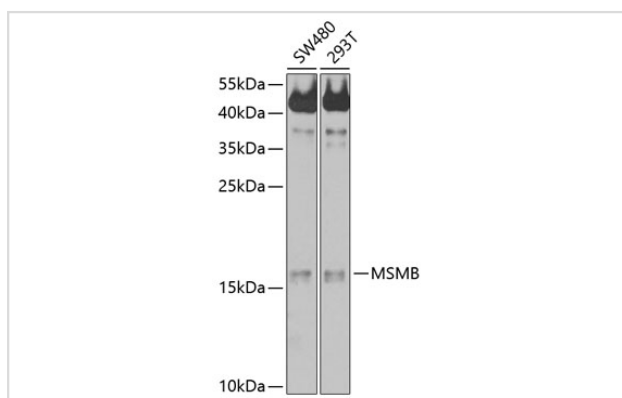
## Description

Product Name	MSMB Antibody
Host Species	Rabbit
Clonality	Polyclonal
Isotype	IgG
Purification	Affinity purification
Applications	WB
Species Reactivity	Human,Mouse
Specificity	The antibody detects endogenous level of total MSMB protein.
Immunogen Type	Recombinant Protein
Immunogen Description	Recombinant fusion protein of human MSMB (NP_002434.1).
Target Name	MSMB
Other Names	MSMB;HPC13;IGBF;MSP;MSPB;PN44;PRPS;PSP;PSP-94;PSP57;PSP94
Accession No.	Uniprot:P08118GeneID:4477
Uniprot	P08118
GeneID	4477
SDS-PAGE MW	16kDa
Concentration	1.0mg/ml
Formulation	PBS with 0.02% sodium azide,50% glycerol,pH7.3.
Storage	Store at -20°C. Avoid freeze / thaw cycles.

## Application Details

WB □ 1:500 - 1:2000

## Images



Western blot analysis of extracts of various cell lines, using MSMB antibody.

## Background

---

The protein encoded by this gene is a member of the immunoglobulin binding factor family. It is synthesized by the epithelial cells of the prostate gland and secreted into the seminal plasma. This protein has inhibin-like activity. It may have a role as an autocrine paracrine factor in uterine, breast and other female reproductive tissues. The expression of the encoded protein is found to be decreased in prostate cancer. Two alternatively spliced transcript variants encoding different isoforms are described for this gene. The use of alternate polyadenylation sites has been found for this gene.

---

Note: This product is for in vitro research use only