

## S100A10 Antibody

Catalog No: #32538

Package Size: #32538-1 50ul #32538-2 100ul

Orders: [order@signalwayantibody.com](mailto:order@signalwayantibody.com)Support: [tech@signalwayantibody.com](mailto:tech@signalwayantibody.com)

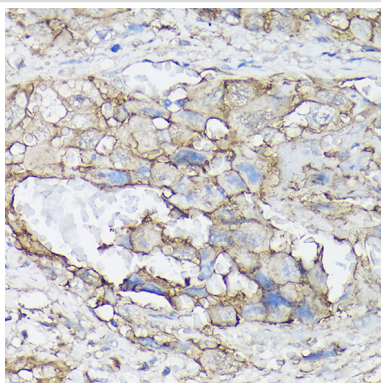
## Description

Product Name	S100A10 Antibody
Host Species	Rabbit
Clonality	Polyclonal
Isotype	IgG
Purification	Affinity purification
Applications	WB,IHC,IF
Species Reactivity	Human,Mouse,Rat
Specificity	The antibody detects endogenous level of total S100A10 protein.
Immunogen Type	Recombinant Protein
Immunogen Description	Recombinant fusion protein of human S100A10 (NP_002957.1).
Target Name	S100A10
Other Names	S100A10;42C;ANX2L;ANX2LG;CAL1L;CLP11;Ca[1];GP11;P11;p10
Accession No.	Uniprot:P60903GenelD:6281
Uniprot	P60903
GenelD	6281
SDS-PAGE MW	11KDa
Concentration	1.0mg/ml
Formulation	PBS with 0.02% sodium azide,50% glycerol,pH7.3.
Storage	Store at -20°C. Avoid freeze / thaw cycles.

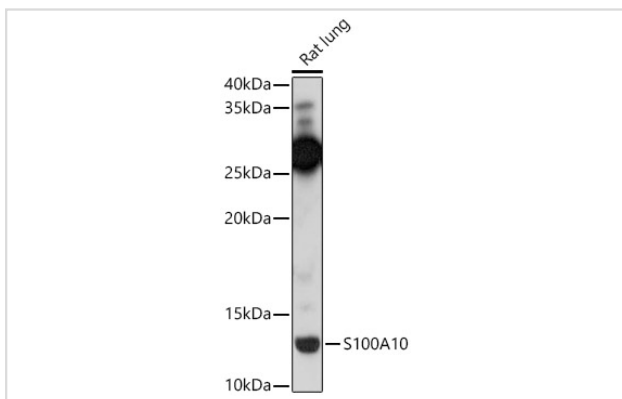
## Application Details

WB 1:500 - 1:2000 IHC 1:50 - 1:200 IF 1:50 - 1:200

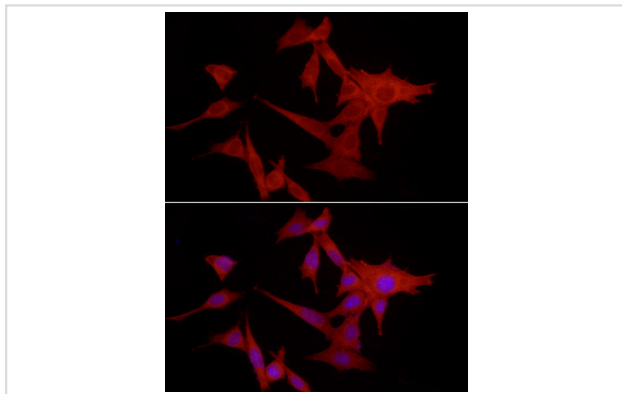
## Images



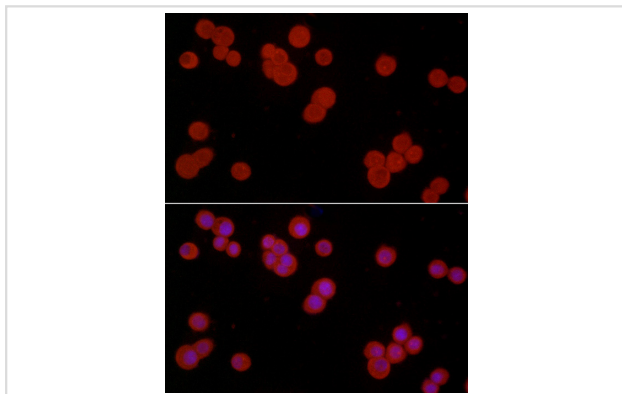
Immunohistochemistry of paraffin-embedded human liver cancer using S100A10 Rabbit pAb.



Western blot analysis of extracts of Rat lung, using S100A10 antibody.



Immunofluorescence analysis of NIH/3T3 cells using S100A10 Rabbit pAb.



Immunofluorescence analysis of HT-29 cells using S100A10 Rabbit pAb.

## Background

The protein encoded by this gene is a member of the S100 family of proteins containing 2 EF-hand calcium-binding motifs. S100 proteins are localized in the cytoplasm and/or nucleus of a wide range of cells, and involved in the regulation of a number of cellular processes such as cell cycle progression and differentiation. S100 genes include at least 13 members which are located as a cluster on chromosome 1q21. This protein may function in exocytosis and endocytosis.

Note: This product is for in vitro research use only