

KPNA4 Antibody

Catalog No: #32557

Package Size: #32557-1 50ul #32557-2 100ul

Orders: order@signalwayantibody.comSupport: tech@signalwayantibody.com

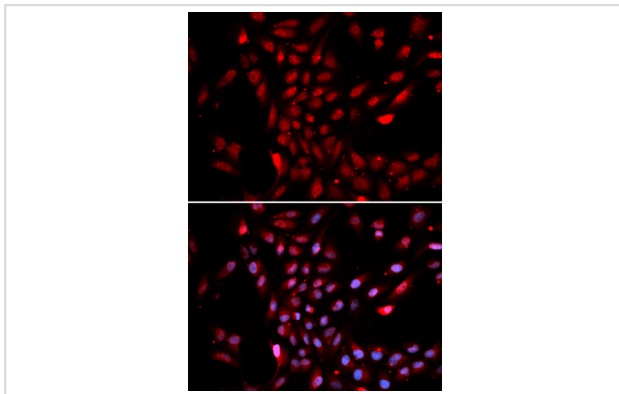
Description

Product Name	KPNA4 Antibody
Host Species	Rabbit
Clonality	Polyclonal
Purification	Antibodies were purified by affinity purification using immunogen.
Applications	WB,IHC,IF
Species Reactivity	Human,Mouse,Rat
Specificity	The antibody detects endogenous level of total KPNA4 protein.
Immunogen Type	Recombinant Protein
Immunogen Description	Recombinant protein of human KPNA4.
Target Name	KPNA4
Other Names	QIP1; SRP3; IPOA3;
Accession No.	Swiss-Prot:O00629NCBI Gene ID:3840
Uniprot	O00629
GeneID	3840;
SDS-PAGE MW	57KD
Concentration	1.0mg/ml
Formulation	Supplied at 1.0mg/mL in phosphate buffered saline (without Mg ²⁺ and Ca ²⁺), pH 7.4, 150mM NaCl, 0.02% sodium azide and 50% glycerol.
Storage	Store at -20°C

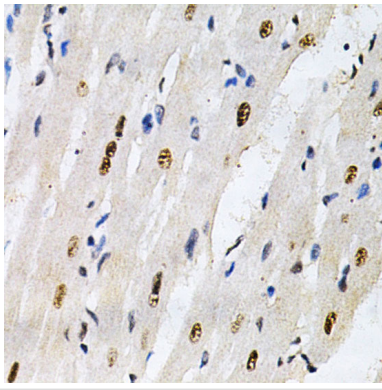
Application Details

WB □ 1:500 - 1:2000 IHC □ 1:50 - 1:200 IF □ 1:50 - 1:200

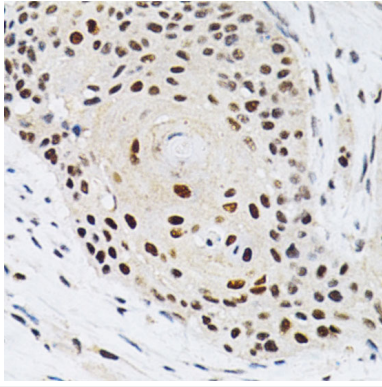
Images



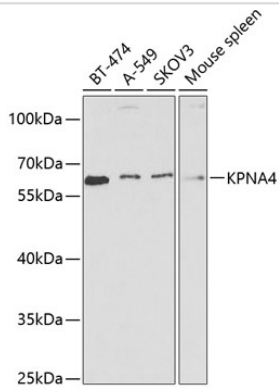
Immunofluorescence analysis of U2OS cells using KPNA4 .
Blue: DAPI for nuclear staining.



Immunohistochemistry of paraffin-embedded rat heart using KPNA4 at dilution of 1:200 (40x lens).



Immunohistochemistry of paraffin-embedded human esophageal cancer using KPNA4 at dilution of 1:200 (40x lens).



Western blot analysis of extracts of various cell lines, using KPNA4 at 1:1000 dilution.

Background

The nuclear import of karyophilic proteins is directed by short amino acid sequences termed nuclear localization signals (NLSs). Karyopherins, or importins, are cytoplasmic proteins that recognize NLSs and dock NLS-containing proteins to the nuclear pore complex. The protein encoded by this gene shares the sequence similarity with *Xenopus* importin-alpha and *Saccharomyces cerevisiae* Srp1. This protein is found to interact with the NLSs of DNA helicase Q1 and SV40 T antigen.

Note: This product is for in vitro research use only