

CLDN7 Antibody

Catalog No: #32564

Package Size: #32564-1 50ul #32564-2 100ul

Orders: order@signalwayantibody.com

Support: tech@signalwayantibody.com

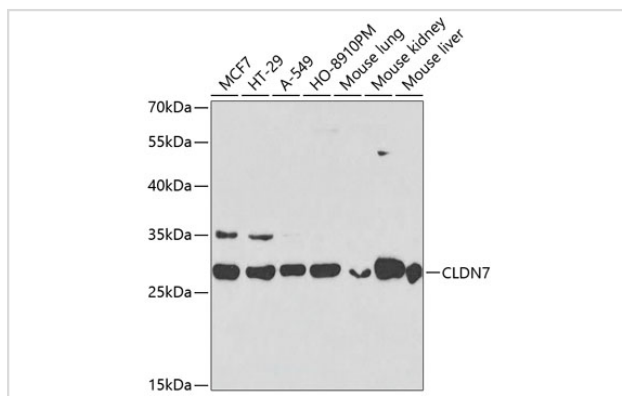
Description

Product Name	CLDN7 Antibody
Host Species	Rabbit
Clonality	Polyclonal
Purification	Antibodies were purified by affinity purification using immunogen.
Applications	WB
Species Reactivity	Human,Mouse,Rat
Specificity	The antibody detects endogenous level of total CLDN7 protein.
Immunogen Type	Recombinant Protein
Immunogen Description	Recombinant protein of human CLDN7.
Target Name	CLDN7
Other Names	CLDN-7; CEPTRL2; CPETRL2; Hs.84359; claudin-1
Accession No.	Swiss-Prot:O95471NCBI Gene ID:1366
Uniprot	O95471
GeneID	1366;
SDS-PAGE MW	24KD
Concentration	1.0mg/ml
Formulation	Supplied at 1.0mg/mL in phosphate buffered saline (without Mg ²⁺ and Ca ²⁺), pH 7.4, 150mM NaCl, 0.02% sodium azide and 50% glycerol.
Storage	Store at -20°C

Application Details

WB □ 1:500 - 1:2000

Images



Western blot analysis of extracts of various cell lines, using CLDN7 at 1:1000 dilution.

Background

This gene encodes a member of the claudin family. Claudins are integral membrane proteins and components of tight junction strands. Tight junction strands serve as a physical barrier to prevent solutes and water from passing freely through the paracellular space between epithelial or endothelial cell sheets, and also play critical roles in maintaining cell polarity and signal transductions. Differential expression of this gene has been observed in different types of malignancies, including breast cancer, ovarian cancer, hepatocellular carcinomas, urinary tumors, prostate cancer, lung cancer, head and neck cancers, thyroid carcinomas, etc.. Alternatively spliced transcript variants encoding different isoforms have been found..

Note: This product is for in vitro research use only