

## PCK1 Antibody

Catalog No: #32565

Package Size: #32565-1 50ul #32565-2 100ul

Orders: order@signalwayantibody.com

Support: tech@signalwayantibody.com

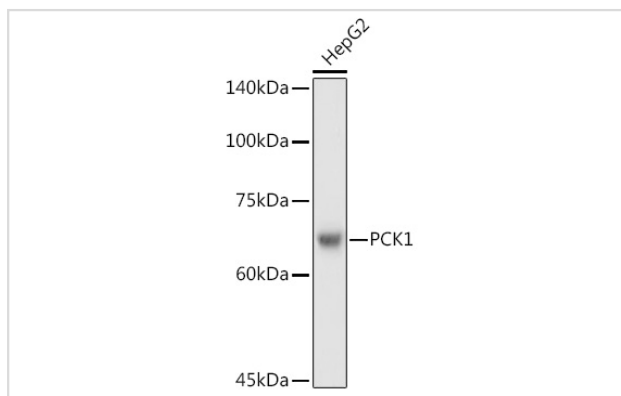
## Description

Product Name	PCK1 Antibody
Host Species	Rabbit
Clonality	Polyclonal
Isotype	IgG
Purification	Affinity purification
Applications	WB,IF
Species Reactivity	Human,Mouse,Rat
Specificity	The antibody detects endogenous level of total PCK1 protein.
Immunogen Type	Peptide
Immunogen Description	A synthetic peptide of human PCK1 (NP_002582.3).
Target Name	PCK1
Other Names	PCK1;PEPCK-C;PEPCK1;PEPCKC
Accession No.	Uniprot:P35558GeneID:5105
Uniprot	P35558
GeneID	5105
SDS-PAGE MW	69KDa
Concentration	1.0mg/ml
Formulation	PBS with 0.02% sodium azide,50% glycerol,pH7.3.
Storage	Store at -20°C. Avoid freeze / thaw cycles.

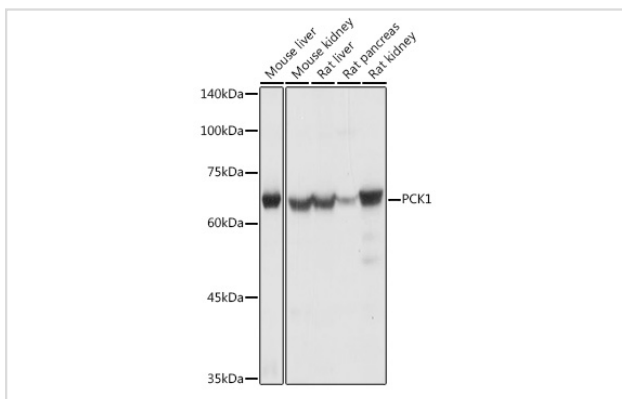
## Application Details

WB □ 1:1000 - 1:2000 IF □ 1:50 - 1:200

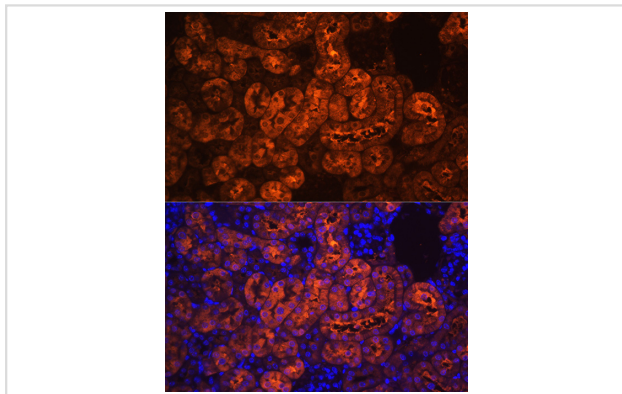
## Images



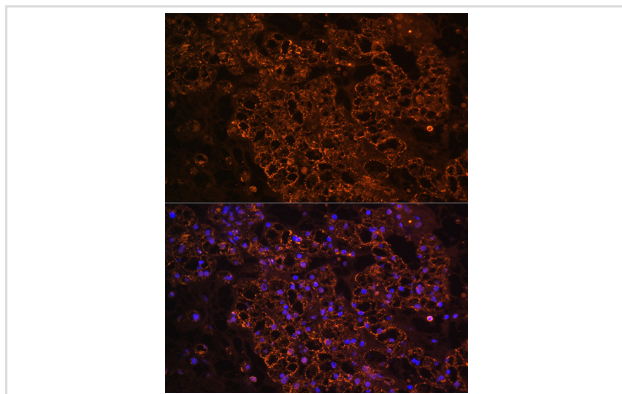
Western blot analysis of extracts of HepG2 cells, using PCK1 antibody.



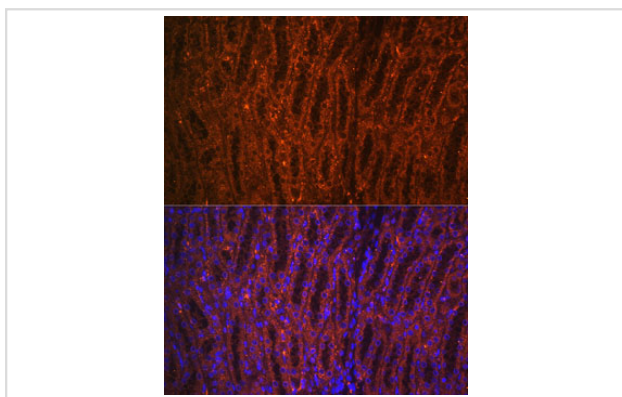
Western blot analysis of extracts of various cell lines, using PCK1 antibody.



Immunofluorescence analysis of mouse kidney using PCK1 Rabbit pAb.



Immunofluorescence analysis of human kidney cancer using PCK1 Rabbit pAb.



Immunofluorescence analysis of rat kidney using PCK1 Rabbit pAb.

## Background

This gene is a main control point for the regulation of gluconeogenesis. The cytosolic enzyme encoded by this gene, along with GTP, catalyzes the formation of phosphoenolpyruvate from oxaloacetate, with the release of carbon dioxide and GDP. The expression of this gene can be regulated by insulin, glucocorticoids, glucagon, cAMP, and diet. Defects in this gene are a cause of cytosolic phosphoenolpyruvate carboxykinase deficiency. A mitochondrial isozyme of the encoded protein also has been characterized.

---

Note: This product is for in vitro research use only