

## CCNB1 Antibody

Catalog No: #32575

Package Size: #32575-1 50ul #32575-2 100ul

Orders: [order@signalwayantibody.com](mailto:order@signalwayantibody.com)Support: [tech@signalwayantibody.com](mailto:tech@signalwayantibody.com)

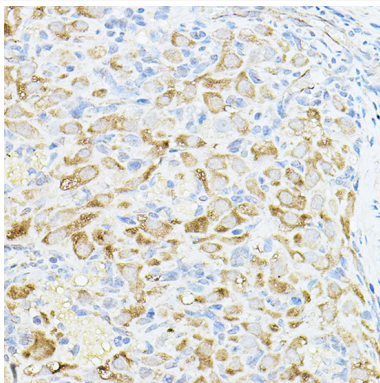
## Description

Product Name	CCNB1 Antibody
Host Species	Rabbit
Clonality	Polyclonal
Isotype	IgG
Purification	Affinity purification
Applications	WB,IHC,IF
Species Reactivity	Human,Mouse,Rat
Specificity	The antibody detects endogenous level of total CCNB1 protein.
Immunogen Type	Peptide
Immunogen Description	A synthetic peptide of human CCNB1.
Target Name	CCNB1
Other Names	CCNB;CCNB1;Cyclin B1;cyclin B1
Accession No.	Uniprot:P14635GeneID:891
Uniprot	P14635
GeneID	891
SDS-PAGE MW	55KDa
Concentration	1.0mg/ml
Formulation	PBS with 0.02% sodium azide,50% glycerol,pH7.3.
Storage	Store at -20°C. Avoid freeze / thaw cycles.

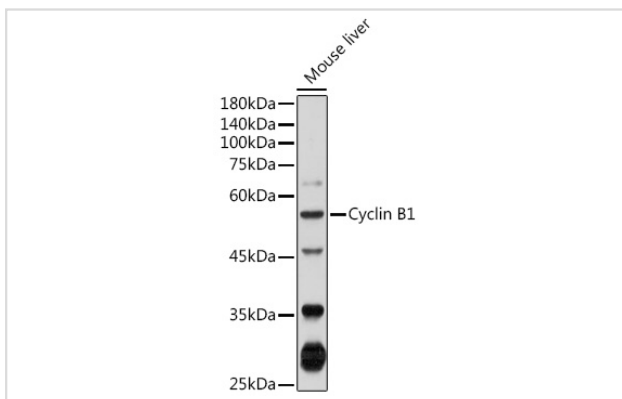
## Application Details

WB □ 1:500 - 1:2000 IHC □ 1:50 - 1:200 IF □ 1:50 - 1:200

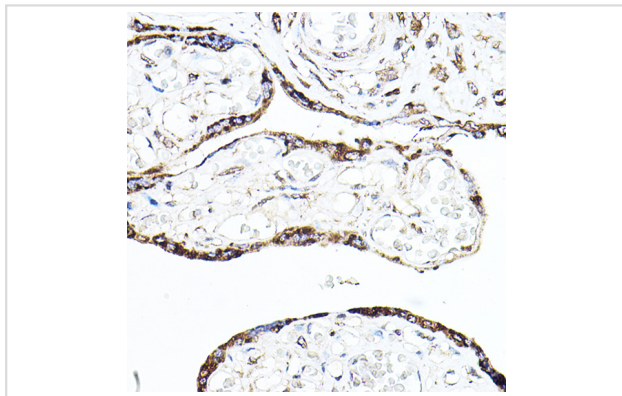
## Images



Immunohistochemistry of paraffin-embedded rat ovary using Cyclin B1 Rabbit pAb.



Western blot analysis of extracts of Mouse liver, using Cyclin B1 antibody.



Immunohistochemistry of paraffin-embedded human placenta using Cyclin B1 Rabbit pAb.

## Background

The protein encoded by this gene is a regulatory protein involved in mitosis. The gene product complexes with p34(cdc2) to form the maturation-promoting factor (MPF). Two alternative transcripts have been found, a constitutively expressed transcript and a cell cycle-regulated transcript, that is expressed predominantly during G2/M phase. The different transcripts result from the use of alternate transcription initiation sites.

Note: This product is for in vitro research use only