

XRCC6 Antibody

Catalog No: #32588

Package Size: #32588-1 50ul #32588-2 100ul

Orders: order@signalwayantibody.comSupport: tech@signalwayantibody.com

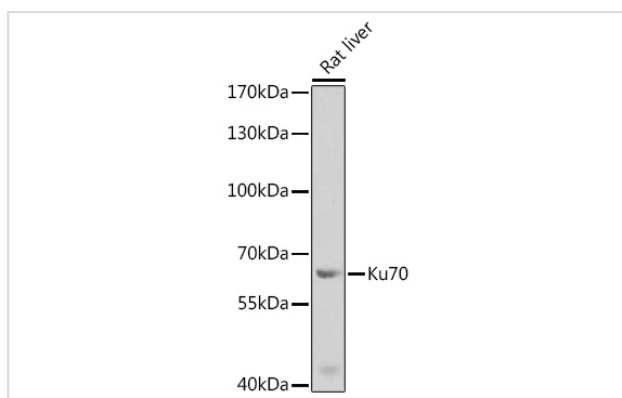
Description

Product Name	XRCC6 Antibody
Host Species	Rabbit
Clonality	Polyclonal
Isotype	IgG
Purification	Affinity purification
Applications	WB,IHC
Species Reactivity	Human,Mouse,Rat
Specificity	The antibody detects endogenous level of total XRCC6 protein.
Immunogen Type	Recombinant Protein
Immunogen Description	Recombinant fusion protein of human Ku70 (NP_001460.1).
Target Name	XRCC6
Other Names	XRCC6;CTC75;CTCBF;G22P1;KU70;ML8;TLAA
Accession No.	Uniprot:P12956GeneID:2547
Uniprot	P12956
GeneID	2547
SDS-PAGE MW	68kDa
Concentration	1.0mg/ml
Formulation	PBS with 0.02% sodium azide,50% glycerol,pH7.3.
Storage	Store at -20°C. Avoid freeze / thaw cycles.

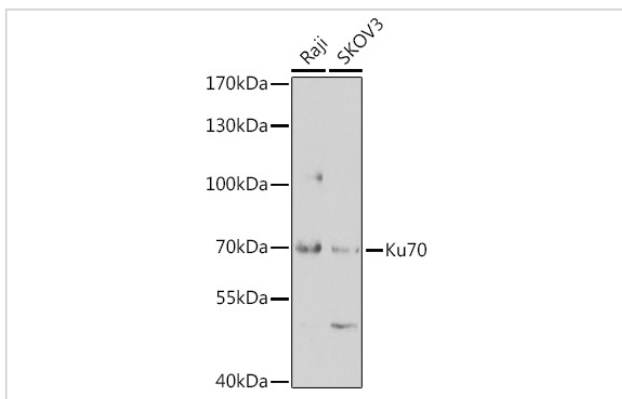
Application Details

WB □ 1:500 - 1:2000 IHC □ 1:50 - 1:200

Images



Western blot analysis of extracts of rat liver, using Ku70 antibody.



Western blot analysis of extracts of various cell lines, using Ku70 antibody.

Background

The p70/p80 autoantigen is a nuclear complex consisting of two subunits with molecular masses of approximately 70 and 80 kDa. The complex functions as a single-stranded DNA-dependent ATP-dependent helicase. The complex may be involved in the repair of nonhomologous DNA ends such as that required for double-strand break repair, transposition, and V(D)J recombination. High levels of autoantibodies to p70 and p80 have been found in some patients with systemic lupus erythematosus.

Note: This product is for in vitro research use only