

IGF2 Antibody

Catalog No: #32592

Package Size: #32592-1 50ul #32592-2 100ul

Orders: order@signalwayantibody.comSupport: tech@signalwayantibody.com

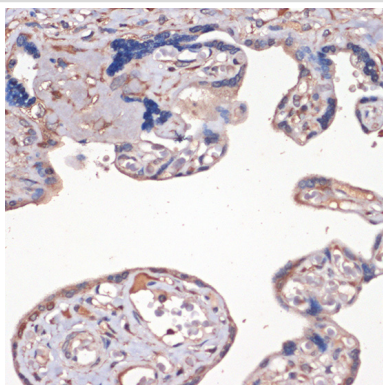
Description

Product Name	IGF2 Antibody
Host Species	Rabbit
Clonality	Polyclonal
Isotype	IgG
Purification	Affinity purification
Applications	WB,IHC,IF
Species Reactivity	Human,Mouse,Rat
Specificity	The antibody detects endogenous level of total IGF2 protein.
Immunogen Type	Recombinant Protein
Immunogen Description	Recombinant fusion protein of human IGF2 (NP_000603.1).
Target Name	IGF2
Other Names	IGF2;C11orf43;GRDF;IGF-II;PP9974
Accession No.	Uniprot:P01344GenelD:3481
Uniprot	P01344
GenelD	3481
SDS-PAGE MW	20KDa
Concentration	1.0mg/ml
Formulation	PBS with 0.02% sodium azide,50% glycerol,pH7.3.
Storage	Store at -20°C. Avoid freeze / thaw cycles.

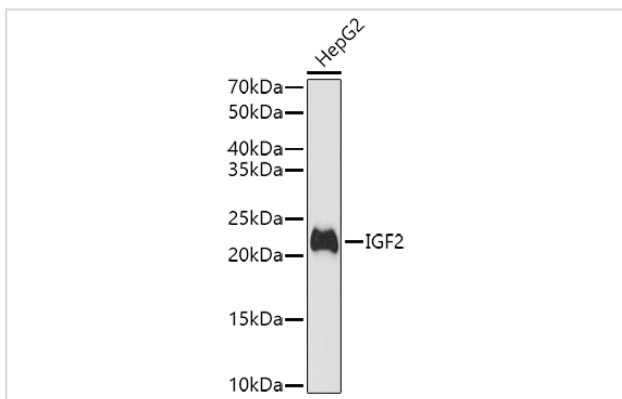
Application Details

WB □ 1:500 - 1:2000 IHC □ 1:50 - 1:200 IF □ 1:50 - 1:100

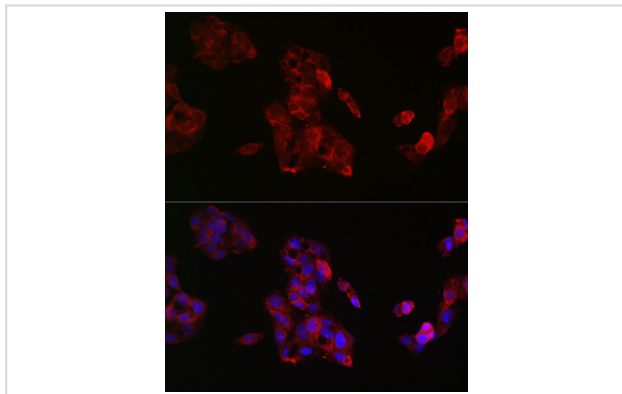
Images



Immunohistochemistry of paraffin-embedded human placenta using IGF2 Rabbit pAb.



Western blot analysis of extracts of HepG2 cells, using IGF2 antibody.



Immunofluorescence analysis of HepG2 cells using IGF2 Rabbit pAb.

Background

This gene encodes a member of the insulin family of polypeptide growth factors, which are involved in development and growth. It is an imprinted gene, expressed only from the paternal allele, and epigenetic changes at this locus are associated with Wilms tumour, Beckwith-Wiedemann syndrome, rhabdomyosarcoma, and Silver-Russell syndrome. A read-through INS-IGF2 gene exists, whose 5' region overlaps the INS gene and the 3' region overlaps this gene. Alternatively spliced transcript variants encoding different isoforms have been found for this gene.

Note: This product is for in vitro research use only