

## IKBKB Antibody

Catalog No: #32593

Package Size: #32593-1 50ul #32593-2 100ul

Orders: order@signalwayantibody.com

Support: tech@signalwayantibody.com

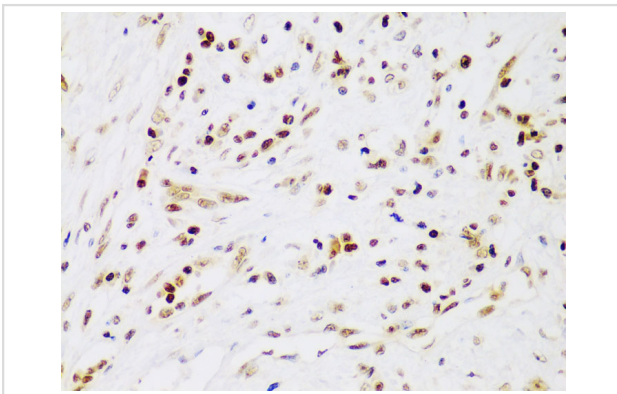
## Description

Product Name	IKBKB Antibody
Host Species	Rabbit
Clonality	Polyclonal
Isotype	IgG
Purification	Affinity purification
Applications	WB,IHC
Species Reactivity	Human,Mouse,Rat
Specificity	The antibody detects endogenous level of total IKBKB protein.
Immunogen Type	Peptide
Immunogen Description	A synthetic peptide of human IKK $\alpha$ 1/2 $\Omega$ 1/2 (NP_001547.1).
Target Name	IKBKB
Other Names	IKBKB;IKK-beta;IKK2;IKKB;IMD15;NFKB1KB;IKK beta
Accession No.	Uniprot:O14920GeneID:3551
Uniprot	O14920
GeneID	3551
SDS-PAGE MW	87KDa
Concentration	1.0mg/ml
Formulation	PBS with 0.02% sodium azide,50% glycerol,pH7.3.
Storage	Store at -20°C. Avoid freeze / thaw cycles.

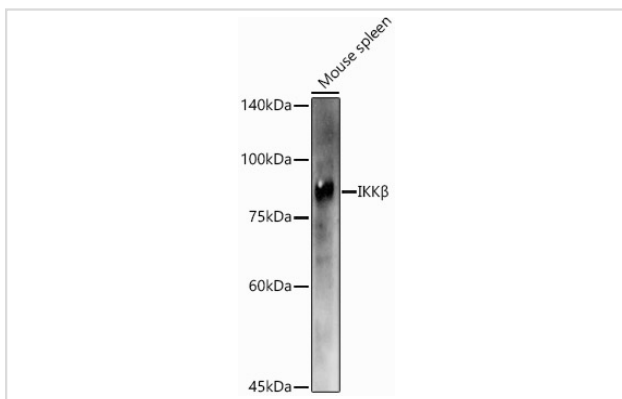
## Application Details

WB  $\square$  1:500 - 1:2000 IHC  $\square$  1:50 - 1:200

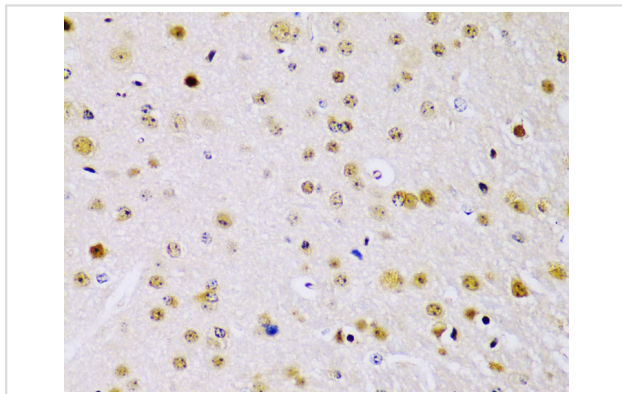
## Images



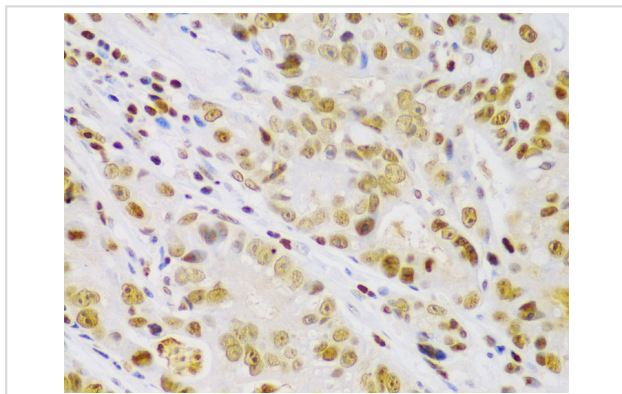
Immunohistochemistry of paraffin-embedded human liver cancer using IKK $\alpha$ 1/2 $\Omega$ 1/2 antibody.



Western blot analysis of extracts of Mouse spleen, using IKK $\alpha$  antibody.



Immunohistochemistry of paraffin-embedded mouse brain using IKK $\alpha$  antibody.



Immunohistochemistry of paraffin-embedded human gastric cancer using IKK $\alpha$  antibody.

## Background

The protein encoded by this gene phosphorylates the inhibitor in the inhibitor/NF-kappa-B complex, causing dissociation of the inhibitor and activation of NF-kappa-B. The encoded protein itself is found in a complex of proteins. Several transcript variants, some protein-coding and some not, have been found for this gene.

Note: This product is for in vitro research use only