

SCCPDH Antibody

Catalog No: #32625

Package Size: #32625-1 50ul #32625-2 100ul

Orders: order@signalwayantibody.com

Support: tech@signalwayantibody.com

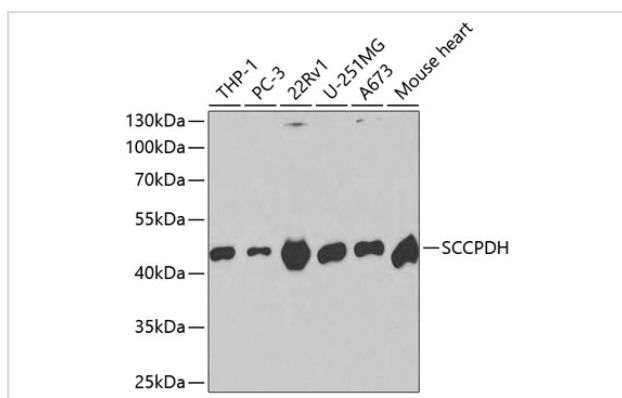
Description

Product Name	SCCPDH Antibody
Host Species	Rabbit
Clonality	Polyclonal
Purification	Antibodies were purified by affinity purification using immunogen.
Applications	WB
Species Reactivity	Human,Mouse
Specificity	The antibody detects endogenous level of total SCCPDH protein.
Immunogen Type	Recombinant Protein
Immunogen Description	Recombinant protein of human SCCPDH.
Target Name	SCCPDH
Other Names	NET11; CGI-49; RP11-439E19.2;
Accession No.	Swiss-Prot:Q8NBX0NCBI Gene ID:51097
Uniprot	Q8NBX0
GeneID	51097;
SDS-PAGE MW	47KD
Concentration	1.0mg/ml
Formulation	Supplied at 1.0mg/mL in phosphate buffered saline (without Mg ²⁺ and Ca ²⁺), pH 7.4, 150mM NaCl, 0.02% sodium azide and 50% glycerol.
Storage	Store at -20°C

Application Details

WB □ 1:500 - 1:2000

Images



Western blot analysis of extracts of various cell lines, using SCCPDH at 1:1000 dilution.

Background

SCCPDH (Probable saccharopine dehydrogenase) is a 429 amino acid protein that belongs to the saccharopine dehydrogenase family. The SCCPDH gene is conserved in chimpanzee, dog, cow, mouse, rat, chicken, fruit fly, mosquito and C.elegans, and maps to human chromosome 1q44. Chromosome 1 is the largest human chromosome spanning about 260 million base pairs and making up 8% of the human genome. There are about 3,000 genes on chromosome 1, and considering the great number of genes there are also a large number of diseases associated with chromosome 1. Stickler syndrome, Parkinsons, Gaucher disease and Usher syndrome are also associated with chromosome 1. A breakpoint has been identified in 1q which disrupts the DISC1 gene and is linked to schizophrenia. Aberrations in chromosome 1 are found in a variety of cancers including head and neck cancer, malignant melanoma and multiple myeloma.

Note: This product is for in vitro research use only