

SPINLW1 Antibody

Catalog No: #32626

Package Size: #32626-1 50ul #32626-2 100ul

Orders: order@signalwayantibody.com

Support: tech@signalwayantibody.com

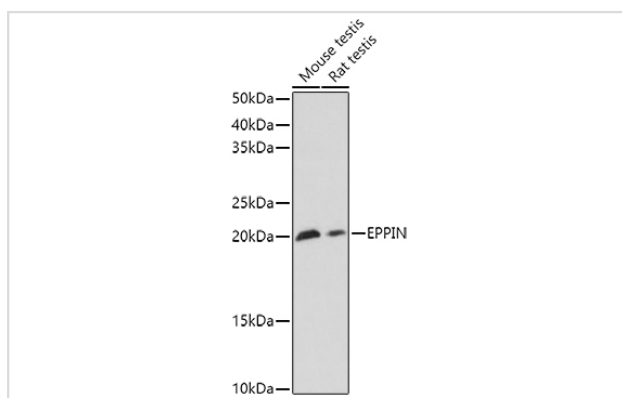
Description

Product Name	SPINLW1 Antibody
Host Species	Rabbit
Clonality	Polyclonal
Isotype	IgG
Purification	Affinity purification
Applications	WB
Species Reactivity	Human,Mouse,Rat
Specificity	The antibody detects endogenous level of total SPINLW1 protein.
Immunogen Type	Recombinant Protein
Immunogen Description	Recombinant fusion protein of human EPPIN (NP_065131.1).
Target Name	SPINLW1
Other Names	EPPIN;CT71;CT72;SPINLW1;WAP7;WFDC7;dJ461P17.2;eppin
Accession No.	Uniprot:O95925GeneID:57119
Uniprot	O95925
GeneID	57119
SDS-PAGE MW	20KDa
Concentration	1.0mg/ml
Formulation	PBS with 0.02% sodium azide,50% glycerol,pH7.3.
Storage	Store at -20°C. Avoid freeze / thaw cycles.

Application Details

WB □ 1:500 - 1:2000

Images



Western blot analysis of extracts of various cell lines, using EPPIN antibody.

Background

This gene encodes an epididymal protease inhibitor, which contains both kunitz-type and WAP-type four-disulfide core (WFDC) protease inhibitor consensus sequences. Most WFDC genes are localized to chromosome 20q12-q13 in two clusters: centromeric and telomeric. This gene is a member of the WFDC gene family and belongs to the telomeric cluster. The protein can inhibit human sperm motility and exhibits antimicrobial activity against *E. coli*, and polymorphisms in this gene are associated with male infertility. Read-through transcription also exists between this gene and the downstream WFDC6 (WAP four-disulfide core domain 6) gene. Two transcript variants encoding different isoforms have been found for this gene.

Note: This product is for in vitro research use only