

CYP1A1 Antibody

Catalog No: #32629



Package Size: #32629-1 50ul #32629-2 100ul

Orders: order@signalwayantibody.com
Support: tech@signalwayantibody.com

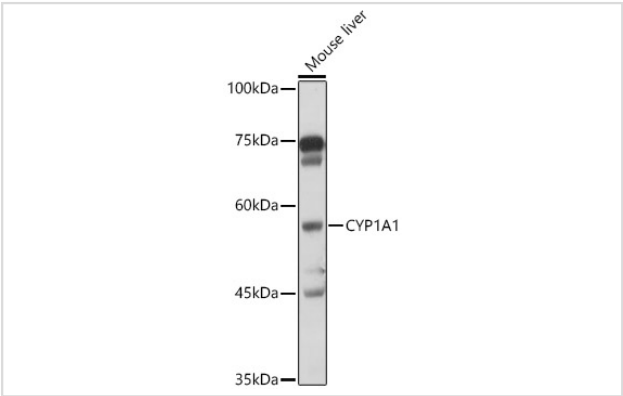
Description

Product Name	CYP1A1 Antibody
Host Species	Rabbit
Clonality	Polyclonal
Isotype	IgG
Purification	Affinity purification
Applications	WB,IHC,IF
Species Reactivity	Human,Mouse,Rat
Specificity	The antibody detects endogenous level of total CYP1A1 protein.
Immunogen Type	Recombinant Protein
Immunogen Description	Recombinant fusion protein of human CYP1A1 (NP_000490.1).
Target Name	CYP1A1
Other Names	CYP1A1;AHH;AHRR;CP11;CYP1;CYPIA1;P1-450;P450-C;P450DX
Accession No.	Uniprot:P04798GeneID:1543
Uniprot	P04798
GeneID	1543
SDS-PAGE MW	58KDa
Concentration	1.0mg/ml
Formulation	PBS with 0.02% sodium azide,50% glycerol,pH7.3.
Storage	Store at -20°C. Avoid freeze / thaw cycles.

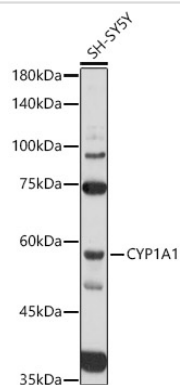
Application Details

WB 1:500 - 1:2000IHC 1:50 - 1:200IF 1:50 - 1:200

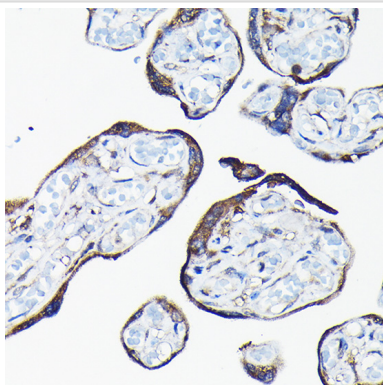
Images



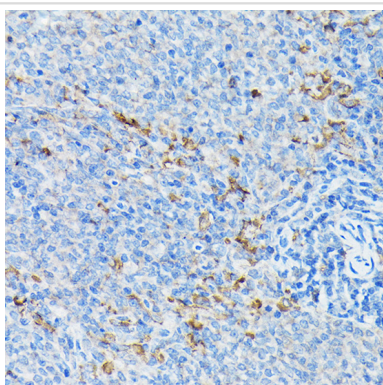
Western blot analysis of extracts of Mouse liver, using CYP1A1 antibody.



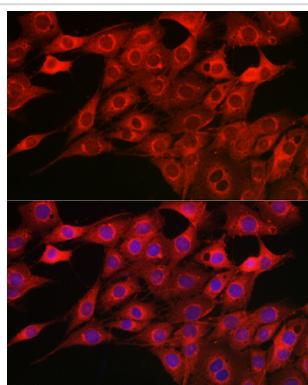
Western blot analysis of extracts of SH-SY5Y cells, using CYP1A1 antibody.



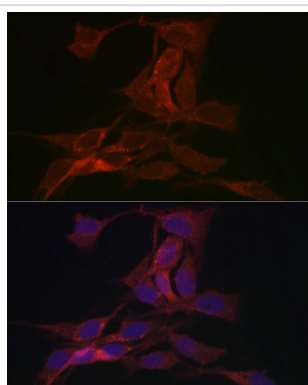
Immunohistochemistry of paraffin-embedded human placenta using CYP1A1 Rabbit pAb.



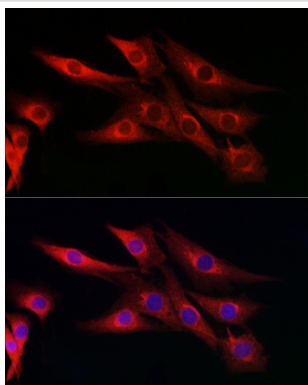
Immunohistochemistry of paraffin-embedded mouse spleen using CYP1A1 Rabbit pAb.



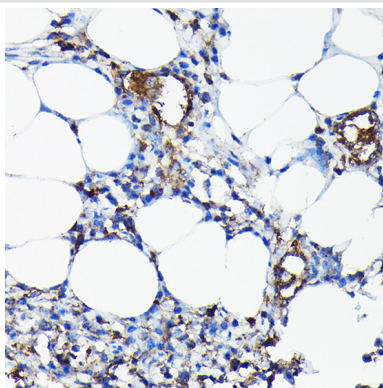
Immunofluorescence analysis of PC-12 cells using CYP1A1 Rabbit pAb.



Immunofluorescence analysis of U2OS cells using CYP1A1 Rabbit pAb.



Immunofluorescence analysis of NIH/3T3 cells using CYP1A1 Rabbit pAb.



Immunohistochemistry of paraffin-embedded rat lung using CYP1A1 Rabbit pAb.

Background

This gene, CYP1A1, encodes a member of the cytochrome P450 superfamily of enzymes. The cytochrome P450 proteins are monooxygenases which catalyze many reactions involved in drug metabolism and synthesis of cholesterol, steroids and other lipids. This protein localizes to the endoplasmic reticulum and its expression is induced by some polycyclic aromatic hydrocarbons (PAHs), some of which are found in cigarette smoke. The enzyme's endogenous substrate is unknown; however, it is able to metabolize some PAHs to carcinogenic intermediates. The gene has been associated with lung cancer risk. A related family member, CYP1A2, is located approximately 25 kb away from CYP1A1 on chromosome 15. Alternative splicing results in multiple transcript variants encoding distinct isoforms.

Note: This product is for in vitro research use only