

## ITGB2 Antibody

Catalog No: #32640

Package Size: #32640-1 50ul #32640-2 100ul

Orders: order@signalwayantibody.com

Support: tech@signalwayantibody.com

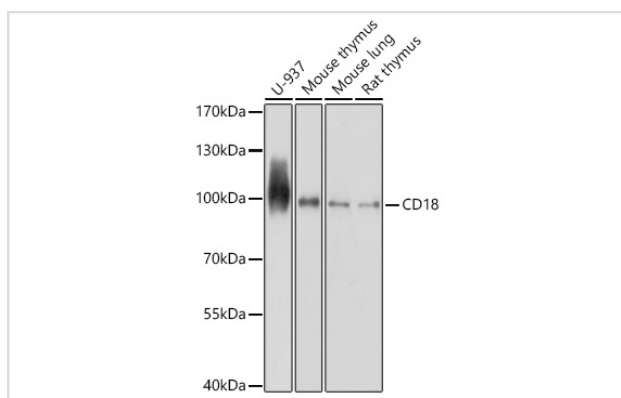
## Description

Product Name	ITGB2 Antibody
Host Species	Rabbit
Clonality	Polyclonal
Isotype	IgG
Purification	Affinity purification
Applications	WB,IHC
Species Reactivity	Human,Mouse,Rat
Specificity	The antibody detects endogenous level of total ITGB2 protein.
Immunogen Type	Recombinant Protein
Immunogen Description	A synthetic peptide of human CD18 (NP_000202.3).
Target Name	ITGB2
Other Names	CD18;LAD;LCAMB;LFA-1;MAC-1;MF17;MFI7;ITGB2
Accession No.	Uniprot:P05107GeneID:3689
Uniprot	P05107
GeneID	3689
SDS-PAGE MW	100kDa
Concentration	1.0mg/ml
Formulation	PBS with 0.02% sodium azide,50% glycerol,pH7.3.
Storage	Store at -20°C. Avoid freeze / thaw cycles.

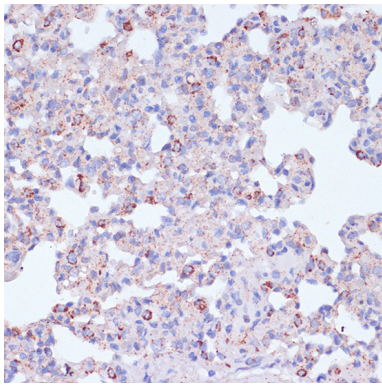
## Application Details

WB □ 1:500 - 1:2000 IHC □ 1:50 - 1:200

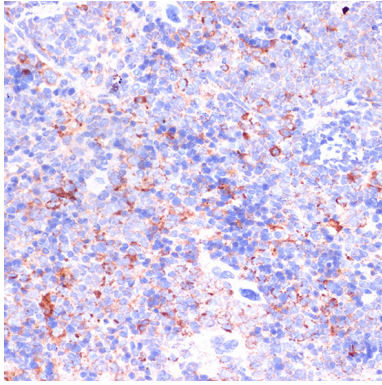
## Images



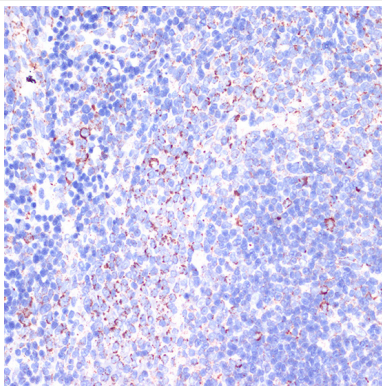
Western blot analysis of extracts of various cell lines, using CD18 antibody.



Immunohistochemistry of paraffin-embedded Rat lung using CD18 antibody.



Immunohistochemistry of paraffin-embedded Mouse spleen using CD18 antibody.



Immunohistochemistry of paraffin-embedded Rat spleen using CD18 antibody.

## Background

This gene encodes an integrin beta chain, which combines with multiple different alpha chains to form different integrin heterodimers. Integrins are integral cell-surface proteins that participate in cell adhesion as well as cell-surface mediated signalling. The encoded protein plays an important role in immune response and defects in this gene cause leukocyte adhesion deficiency. Alternative splicing results in multiple transcript variants.

Note: This product is for in vitro research use only