

STMN1 Antibody

Catalog No: #32643

Package Size: #32643-1 50ul #32643-2 100ul

Orders: order@signalwayantibody.comSupport: tech@signalwayantibody.com

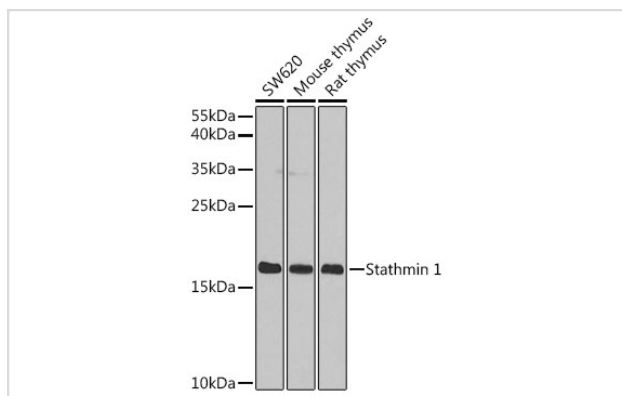
Description

Product Name	STMN1 Antibody
Host Species	Rabbit
Clonality	Polyclonal
Isotype	IgG
Purification	Affinity purification
Applications	WB,IHC
Species Reactivity	Human,Mouse,Rat
Specificity	The antibody detects endogenous level of total STMN1 protein.
Immunogen Type	Recombinant Protein
Immunogen Description	Recombinant fusion protein of human Stathmin 1 (NP_981944.1).
Target Name	STMN1
Other Names	STMN1;C1orf215;LAP18;Lag;OP18;PP17;PP19;PR22;SMN;stathmin
Accession No.	Uniprot:P16949GeneID:3925
Uniprot	P16949
GeneID	3925
SDS-PAGE MW	16kDa
Concentration	1.0mg/ml
Formulation	PBS with 0.02% sodium azide,50% glycerol,pH7.3.
Storage	Store at -20°C. Avoid freeze / thaw cycles.

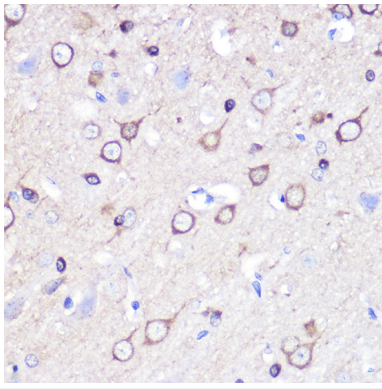
Application Details

WB □ 1:500 - 1:2000 IHC □ 1:50 - 1:200

Images



Western blot analysis of extracts of various cell lines, using Stathmin 1 antibody.



Immunohistochemistry of paraffin-embedded rat brain using Stathmin 1 Rabbit pAb.

Background

This gene belongs to the stathmin family of genes. It encodes a ubiquitous cytosolic phosphoprotein proposed to function as an intracellular relay integrating regulatory signals of the cellular environment. The encoded protein is involved in the regulation of the microtubule filament system by destabilizing microtubules. It prevents assembly and promotes disassembly of microtubules. Multiple transcript variants encoding different isoforms have been found for this gene.

Note: This product is for in vitro research use only