

## PDGFRB Antibody

Catalog No: #32646

Package Size: #32646-1 50ul #32646-2 100ul

Orders: order@signalwayantibody.com

Support: tech@signalwayantibody.com

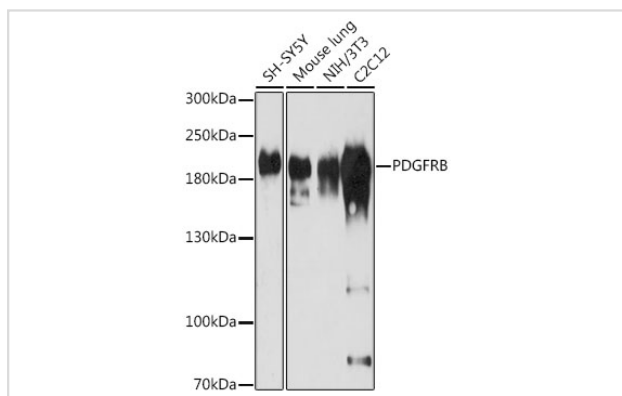
## Description

Product Name	PDGFRB Antibody
Host Species	Rabbit
Clonality	Polyclonal
Isotype	IgG
Purification	Affinity purification
Applications	WB,IHC,IF
Species Reactivity	Human,Mouse,Rat
Specificity	The antibody detects endogenous level of total PDGFRB protein.
Immunogen Type	Recombinant Protein
Immunogen Description	Recombinant fusion protein of human PDGFRB (NP_002600.1).
Target Name	PDGFRB
Other Names	CD140B;IBGC4;IMF1;JTK12;KOGS;PDGFR;PDGFR-1;PDGFR1;PENTT;PDGF Receptor beta;PDGFRB;PDGFR beta
Accession No.	Uniprot:P09619GeneID:5159
Uniprot	P09619
GeneID	5159
SDS-PAGE MW	200kDa
Concentration	1.0mg/ml
Formulation	PBS with 0.02% sodium azide,50% glycerol,pH7.3.
Storage	Store at -20°C. Avoid freeze / thaw cycles.

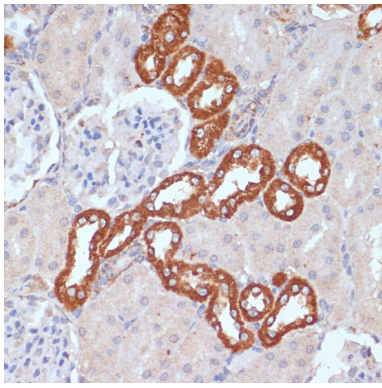
## Application Details

WB □ 1:500 - 1:2000 IHC □ 1:50 - 1:200 IF □ 1:50 - 1:200

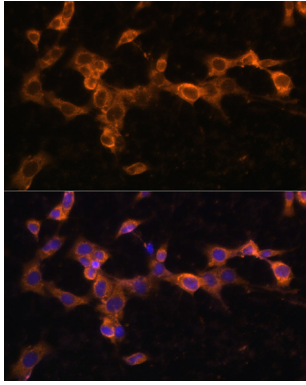
## Images



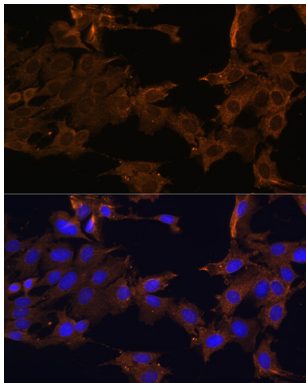
Western blot analysis of extracts of various cell lines, using PDGFRB antibody.



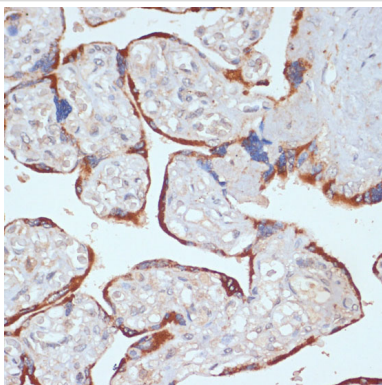
Immunohistochemistry of paraffin-embedded rat kidney using PDGFRB antibody.



Immunofluorescence analysis of NIH/3T3 cells using PDGFRB antibody.



Immunofluorescence analysis of C6 cells using PDGFRB antibody.



Immunohistochemistry of paraffin-embedded human placenta using PDGFRB antibody.

## Background

This gene encodes a cell surface tyrosine kinase receptor for members of the platelet-derived growth factor family. These growth factors are mitogens for cells of mesenchymal origin. The identity of the growth factor bound to a receptor monomer determines whether the functional receptor is a homodimer or a heterodimer, composed of both platelet-derived growth factor receptor alpha and beta polypeptides. This gene is flanked on chromosome 5 by the genes for granulocyte-macrophage colony-stimulating factor and macrophage-colony stimulating factor receptor; all three genes may be implicated in the 5-q syndrome. A translocation between chromosomes 5 and 12, that fuses this gene to that of the translocation, ETV6, leukemia gene, results in chronic myeloproliferative disorder with eosinophilia.

---

Note: This product is for in vitro research use only