

PLCG2 Antibody

Catalog No: #32647

Package Size: #32647-1 50ul #32647-2 100ul

Orders: order@signalwayantibody.com

Support: tech@signalwayantibody.com

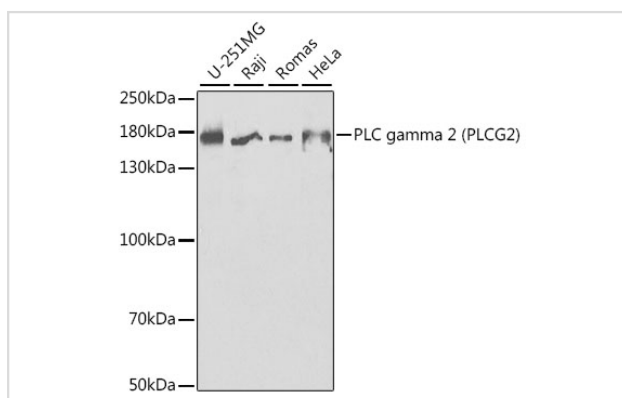
Description

Product Name	PLCG2 Antibody
Host Species	Rabbit
Clonality	Polyclonal
Isotype	IgG
Purification	Affinity purification
Applications	WB,IF
Species Reactivity	Human,Mouse
Specificity	The antibody detects endogenous level of total PLCG2 protein.
Immunogen Type	Recombinant Protein
Immunogen Description	Recombinant fusion protein of human PLC gamma 2 (PLC gamma 2 (PLCG2)) (NP_002652.2).
Target Name	PLCG2
Other Names	PLCG2;APLAID;FCAS3;PLC-IV;PLC-gamma-2
Accession No.	Uniprot:P16885GeneID:5336
Uniprot	P16885
GeneID	5336
SDS-PAGE MW	175kDa
Concentration	1.0mg/ml
Formulation	PBS with 0.02% sodium azide,50% glycerol,pH7.3.
Storage	Store at -20°C. Avoid freeze / thaw cycles.

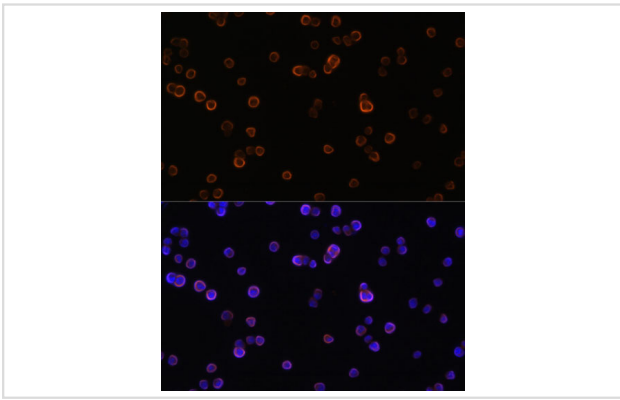
Application Details

WB □ 1:500 - 1:2000 IF □ 1:20 - 1:100

Images



Western blot analysis of extracts of various cell lines, using PLC gamma 2 (PLC gamma 2 (PLCG2)) antibody.



Immunofluorescence analysis of Raw264.7 cells using PLC gamma 2 (PLC gamma 2 (PLCG2)) antibody.

Background

The protein encoded by this gene is a transmembrane signaling enzyme that catalyzes the conversion of 1-phosphatidyl-1D-myo-inositol 4,5-bisphosphate to 1D-myo-inositol 1,4,5-trisphosphate (IP3) and diacylglycerol (DAG) using calcium as a cofactor. IP3 and DAG are second messenger molecules important for transmitting signals from growth factor receptors and immune system receptors across the cell membrane. Mutations in this gene have been found in autoinflammation, antibody deficiency, and immune dysregulation syndrome and familial cold autoinflammatory syndrome 3.

Note: This product is for in vitro research use only