

PMS1 Antibody

Catalog No: #32648

Package Size: #32648-1 50ul #32648-2 100ul

Orders: order@signalwayantibody.com

Support: tech@signalwayantibody.com

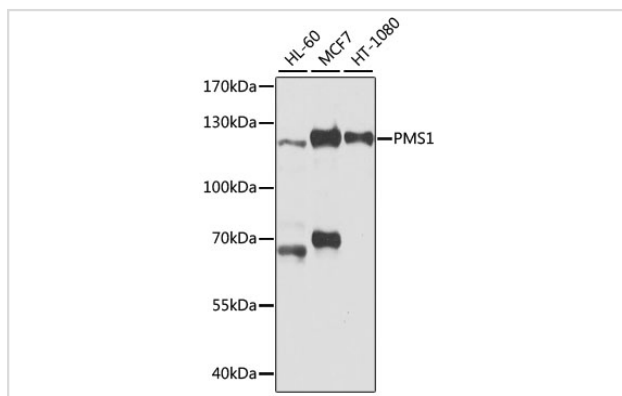
Description

Product Name	PMS1 Antibody
Host Species	Rabbit
Clonality	Polyclonal
Isotype	IgG
Purification	Affinity purification
Applications	WB
Species Reactivity	Human
Specificity	The antibody detects endogenous level of total PMS1 protein.
Immunogen Type	Recombinant Protein
Immunogen Description	Recombinant fusion protein of human PMS1 (NP_000525.1).
Target Name	PMS1
Other Names	PMS1;HNPCC3;MLH2;PMSL1;hPMS1
Accession No.	Uniprot:P54277GenelD:5378
Uniprot	P54277
GenelD	5378
SDS-PAGE MW	110kDa
Concentration	1.0mg/ml
Formulation	PBS with 0.02% sodium azide,50% glycerol,pH7.3.
Storage	Store at -20°C. Avoid freeze / thaw cycles.

Application Details

WB □ 1:500 - 1:2000

Images



Western blot analysis of extracts of various cell lines, using PMS1 antibody.

Background

This gene encodes a protein belonging to the DNA mismatch repair mutL/hexB family. This protein is thought to be involved in the repair of DNA mismatches, and it can form heterodimers with MLH1, a known DNA mismatch repair protein. Mutations in this gene cause hereditary nonpolyposis colorectal cancer type 3 (HNPCC3) either alone or in combination with mutations in other genes involved in the HNPCC phenotype, which is also known as Lynch syndrome.

Note: This product is for in vitro research use only