

SELE Antibody

Catalog No: #32655

Package Size: #32655-1 50ul #32655-2 100ul

Orders: order@signalwayantibody.comSupport: tech@signalwayantibody.com

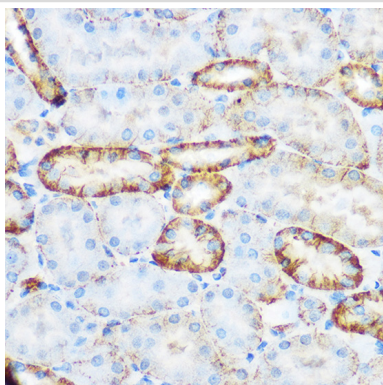
Description

Product Name	SELE Antibody
Host Species	Rabbit
Clonality	Polyclonal
Isotype	IgG
Purification	Affinity purification
Applications	WB,IHC
Species Reactivity	Human,Mouse,Rat
Specificity	The antibody detects endogenous level of total SELE protein.
Immunogen Type	Recombinant Protein
Immunogen Description	Recombinant fusion protein of human SELE (NP_000441.2).
Target Name	SELE
Other Names	SELE;CD62E;ELAM;ELAM1;ESEL;LECAM2
Accession No.	Uniprot:P16581GeneID:6401
Uniprot	P16581
GeneID	6401
SDS-PAGE MW	67KDa
Concentration	1.0mg/ml
Formulation	PBS with 0.02% sodium azide,50% glycerol,pH7.3.
Storage	Store at -20°C. Avoid freeze / thaw cycles.

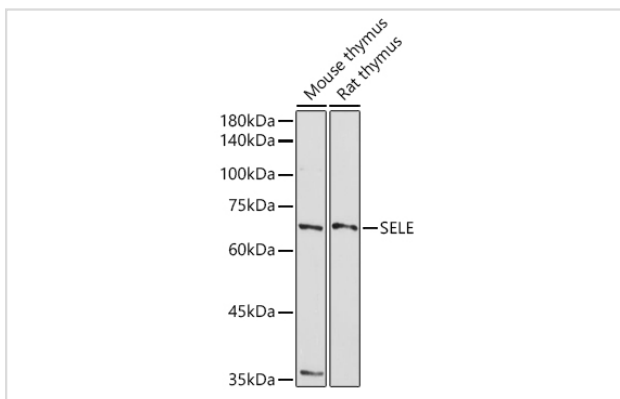
Application Details

WB □ 1:500 - 1:2000 IHC □ 1:50 - 1:200

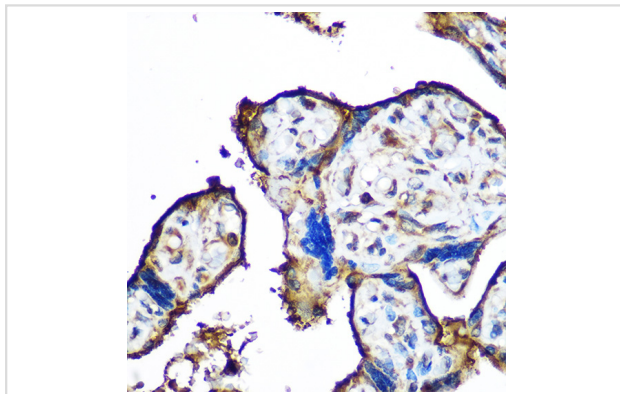
Images



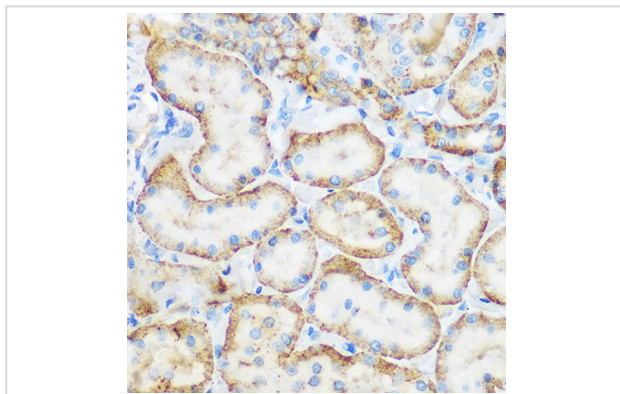
Immunohistochemistry of paraffin-embedded mouse kidney using SELE Rabbit pAb.



Western blot analysis of extracts of various cell lines, using SELE antibody.



Immunohistochemistry of paraffin-embedded human placenta using SELE Rabbit pAb.



Immunohistochemistry of paraffin-embedded rat kidney using SELE Rabbit pAb.

Background

The protein encoded by this gene is found in cytokine-stimulated endothelial cells and is thought to be responsible for the accumulation of blood leukocytes at sites of inflammation by mediating the adhesion of cells to the vascular lining. It exhibits structural features such as the presence of lectin- and EGF-like domains followed by short consensus repeat (SCR) domains that contain 6 conserved cysteine residues. These proteins are part of the selectin family of cell adhesion molecules. Adhesion molecules participate in the interaction between leukocytes and the endothelium and appear to be involved in the pathogenesis of atherosclerosis.

Note: This product is for in vitro research use only