

CLDN1 Antibody

Catalog No: #32658

Package Size: #32658-1 50ul #32658-2 100ul

Orders: order@signalwayantibody.com

Support: tech@signalwayantibody.com

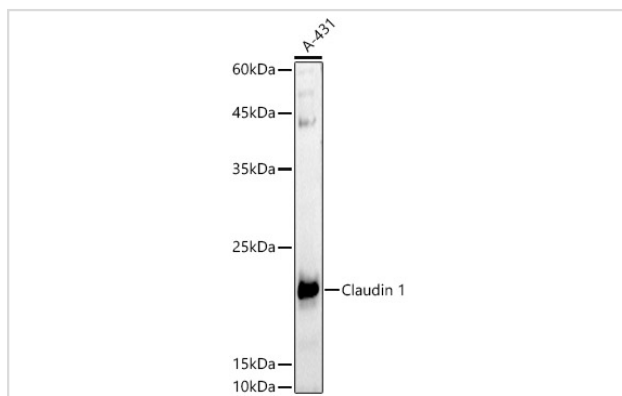
Description

Product Name	CLDN1 Antibody
Host Species	Rabbit
Clonality	Polyclonal
Isotype	IgG
Purification	Affinity purification
Applications	WB,IHC
Species Reactivity	Human,Mouse,Rat
Specificity	The antibody detects endogenous level of total CLDN1 protein.
Immunogen Type	Recombinant Protein
Immunogen Description	Recombinant fusion protein of human Claudin 1 (NP_066924.1).
Target Name	CLDN1
Other Names	CLDN1;CLD1;ILVASC;SEMP1;claudin-1;Claudin 1
Accession No.	Uniprot:O95832GeneID:9076
Uniprot	O95832
GeneID	9076
SDS-PAGE MW	23KDa
Concentration	1.0mg/ml
Formulation	PBS with 0.02% sodium azide,50% glycerol,pH7.3.
Storage	Store at -20°C. Avoid freeze / thaw cycles.

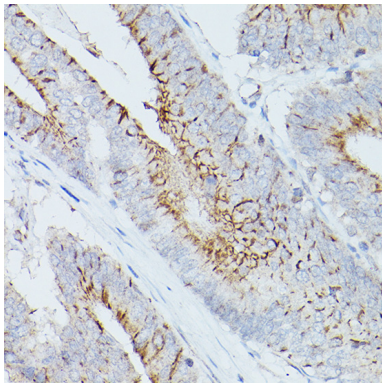
Application Details

WB □ 1:500 - 1:2000 IHC □ 1:50 - 1:200

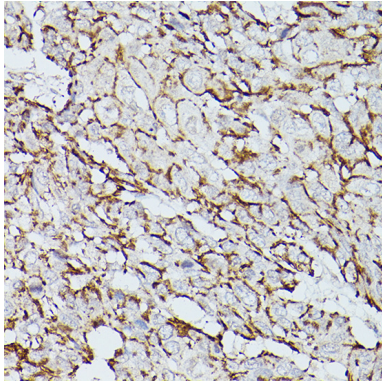
Images



Western blot analysis of extracts of A-431 cells, using Claudin 1 antibody.



Immunohistochemistry of paraffin-embedded human colon carcinoma using Claudin 1 Rabbit pAb.



Immunohistochemistry of paraffin-embedded human esophageal cancer using Claudin 1 Rabbit pAb.

Background

Tight junctions represent one mode of cell-to-cell adhesion in epithelial or endothelial cell sheets, forming continuous seals around cells and serving as a physical barrier to prevent solutes and water from passing freely through the paracellular space. These junctions are comprised of sets of continuous networking strands in the outwardly facing cytoplasmic leaflet, with complementary grooves in the inwardly facing extracytoplasmic leaflet. The protein encoded by this gene, a member of the claudin family, is an integral membrane protein and a component of tight junction strands. Loss of function mutations result in neonatal ichthyosis-sclerosing cholangitis syndrome.

Note: This product is for in vitro research use only