

CHAT Antibody

Catalog No: #32673

Package Size: #32673-1 50ul #32673-2 100ul

Orders: order@signalwayantibody.com

Support: tech@signalwayantibody.com

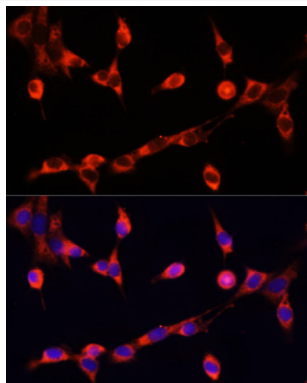
Description

Product Name	CHAT Antibody
Host Species	Rabbit
Clonality	Polyclonal
Purification	Antibodies were purified by affinity purification using immunogen.
Applications	WB,IHC,IF
Species Reactivity	Human,Mouse,Rat
Specificity	The antibody detects endogenous level of total CHAT protein.
Immunogen Type	Recombinant Protein
Immunogen Description	Recombinant protein of human CHAT.
Target Name	CHAT
Other Names	CMS1A; CMS1A2; CHOACTASE;
Accession No.	Swiss-Prot:P28329NCBI Gene ID:1103
Uniprot	P28329
GeneID	1103;
SDS-PAGE MW	83KD
Concentration	1.0mg/ml
Formulation	Supplied at 1.0mg/mL in phosphate buffered saline (without Mg ²⁺ and Ca ²⁺), pH 7.4, 150mM NaCl, 0.02% sodium azide and 50% glycerol.
Storage	Store at -20°C

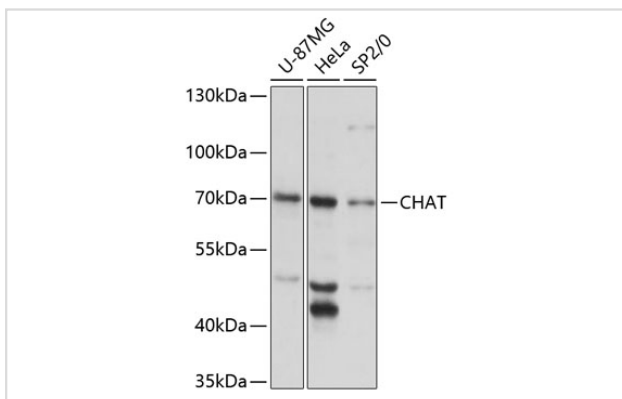
Application Details

WB □ 1:1000 - 1:2000 IHC □ 1:50 - 1:200 IF □ 1:50 - 1:200

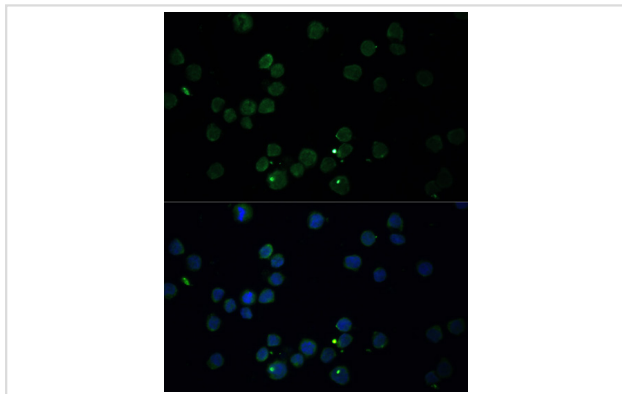
Images



Immunofluorescence analysis of NIH/3T3 cells using CHAT at dilution of 1:100. Blue: DAPI for nuclear staining.



Western blot analysis of extracts of various cell lines, using CHAT at 1:3000 dilution.



Immunofluorescence analysis of THP-1 cells using CHAT at dilution of 1:100. Blue: DAPI for nuclear staining.

Background

This gene encodes an enzyme which catalyzes the biosynthesis of the neurotransmitter acetylcholine. This gene product is a characteristic feature of cholinergic neurons, and changes in these neurons may explain some of the symptoms of Alzheimer's disease. Polymorphisms in this gene have been associated with Alzheimer's disease and mild cognitive impairment. Mutations in this gene are associated with congenital myasthenic syndrome associated with episodic apnea. Multiple transcript variants encoding different isoforms have been found for this gene, and some of these variants have been shown to encode more than one isoform.

Note: This product is for in vitro research use only