

## HSP90B(Ab-254) Antibody

Catalog No: #21290

Package Size: #21290-1 50ul #21290-2 100ul

Orders: order@signalwayantibody.com

Support: tech@signalwayantibody.com

## Description

Product Name	HSP90B(Ab-254) Antibody
Host Species	Rabbit
Clonality	Polyclonal
Purification	Antibodies were produced by immunizing rabbits with synthetic peptide and KLH conjugates. Antibodies were purified by affinity-chromatography using epitope-specific peptide.
Applications	WB IHC IF
Species Reactivity	Hu Ms Rt
Specificity	The antibody detects endogenous level of total HSP90B protein.
Immunogen Type	Peptide-KLH
Immunogen Description	Peptide sequence around aa. 252~256 (V-G-S-D-E) derived from Human HSP90B.
Target Name	HSP90B
Other Names	HSP 84
Accession No.	Swiss-Prot: P08238NCBI Protein: NP_031381.2
Uniprot	P08238
GeneID	3326;
Concentration	1.0mg/ml
Formulation	Supplied at 1.0mg/mL in phosphate buffered saline (without Mg <sup>2+</sup> and Ca <sup>2+</sup> ), pH 7.4, 150mM NaCl, 0.02% sodium azide and 50% glycerol.
Storage	Store at -20°C for long term preservation (recommended). Store at 4°C for short term use.

## Application Details

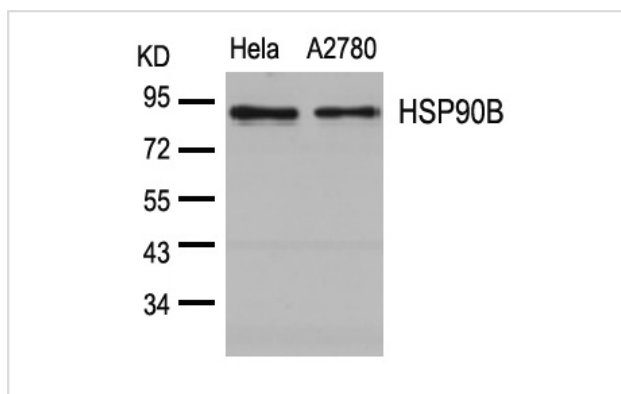
Predicted MW: 92kd

Western blotting: 1:500~1:1000

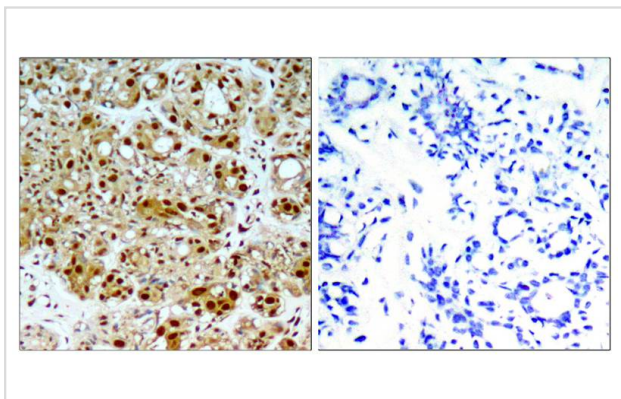
Immunohistochemistry: 1:50~1:100

Immunofluorescence: 1:100~1:200

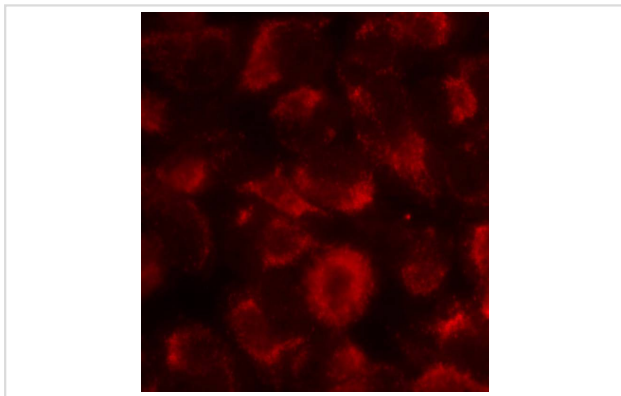
## Images



Western blot analysis of extracts from HeLa and A2780 cells using HSP90B(Ab-254) Antibody #21290.



Immunohistochemical analysis of paraffin-embedded human breast carcinoma tissue using HSP90B(Ab-254) Antibody #21290(left) or the same antibody preincubated with blocking peptide(right).



Immunofluorescence staining of methanol-fixed HeLa cells showing cytoplasmic staining using HSP90B(Ab-254) Antibody #21290.

## Background

Molecular chaperone. Has ATPase activity.

Ingrid K. Ruf, et.al. (2005) J. Virol ; 79: 14562 - 14569.

Christy M. Hebner,et.al. (2006) J. Gen. Virol ; 87: 3183 - 3193.

Rika van Huizen, et.al. (2003) J. Biol. Chem ; 278: 15558 - 15564.

Note: This product is for in vitro research use only